

# Caspase-9 Rabbit mAb

货号: **AYM31066**

## 产品信息

反应	Human,Mouse
宿主	Rabbit
克隆性	Monoclonal
预测反应	
应用	WB IHC IF/ICC IP
推荐浓度	<b>WB:</b> 1:500 - 1:2000 <b>IHC:</b> 1:50 - 1:200 <b>IF/ICC:</b> 1:50 - 1:200 <b>IP:</b> 1:20 - 1:50
理论分子量	17kDa/30kDa/36kDa/46kDa
实测分子量	46,39,37,35kDa
形式	Liquid
保存条件	Store at -20°C. Avoid freeze / thaw cycles. Buffer: PBS with 0.75% BSA,50% glycerol,pH7.3.
偶联物	Unconjugated
阳性对照	Jurkat,K-562,Mouse liver
细胞定位	apoptosome,cytoplasm,cytosol,mitochondrion,nucleus
纯化	Affinity purification

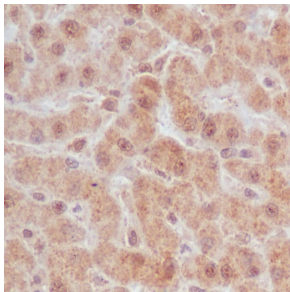
## 抗原信息

抗原信息	Recombinant fusion protein corresponding to Human Caspase-9.
序列	VGALESLRGNADLAYILSMPCGHCLIIINNVNFCRESGLRTRTGSNIDCEKLRRRFSSLHFMVEVKGDLTAKKMLALLELA QQDHGALDCCVVVILSHGCQASHLQFPGAVYGTGCPVSVEKIVNIFNGTSCPSLGGKPKLFFIQACGGEQKDHGFEVA STSPEDSPGSNPEPDATPFQEGLRFTDQLDAISSLPTPSDIFVSYSTFPGFVSWRDPKSGSWYVETLDDIFEQWAHSEDL QSLLLRVANAVSVKGIYKQMPGCFNLRKKLFFKTS

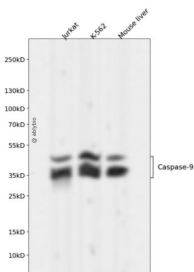
## 靶点信息

研究背景	This gene encodes a member of the cysteine-aspartic acid protease (caspase) family. Sequential activation of caspases plays a central role in the execution-phase of cell apoptosis. Caspases exist as inactive proenzymes which undergo proteolytic processing at conserved aspartic residues to produce two subunits, large and small, that dimerize to form the active enzyme. This protein can undergo autoproteolytic processing and activation by the apoptosome, a protein complex of cytochrome c and the apoptotic peptidase activating factor 1; this step is thought to be one of the earliest in the caspase activation cascade. This protein is thought to play a central role in apoptosis and to be a tumor suppressor. Alternative splicing results in multiple transcript variants.
基因ID	842
基因名	CASP9
Swiss	P55211
别名	CASP9;APAF-3;APAF3;ICE-LAP6;MCH6;PPP1R56;caspase-9;casp9;Caspase 9

## 产品验证



Immunohistochemical analysis of paraffin-embedded human liver, using Caspase-9 Antibody.



Western blot analysis of Caspase-9 expressed in Jurkat, K-562, Mouse liver using Caspase-9 Rabbit mAb at 1:1000. Secondary antibody: HRP Goat Anti-Rabbit IgG (H+L) at 1:5000. Lysates/proteins: 30ug per lane. Blocking buffer: 5% non-fat dry milk in TBST. Detection: ECL Enhanced Kit. Exposure time: 120s.

## 实验步骤

访问官网浏览详情: [www.ablybio.cn](http://www.ablybio.cn)