

ATF4 Rabbit mAb

货号: **AYM31065**

产品信息

反应	Human,Mouse,Rat
宿主	Rabbit
克隆性	Monoclonal
预测反应	
应用	WB IHC IF/ICC IP FC
推荐浓度	WB: 1:500 - 1:2000 IHC: 1:50 - 1:200 IF/ICC: 1:50 - 1:200 IP: 1:20 - 1:50 FC: 1:20 - 1:50
理论分子量	38kDa
实测分子量	50kDa
形式	Liquid
保存条件	Store at -20°C. Avoid freeze / thaw cycles. Buffer: PBS with 0.75% BSA,50% glycerol,pH7.3.
偶联物	Unconjugated
阳性对照	HeLa
细胞定位	Cell membrane,Cytoplasm,Nucleus,centrosome,cytoskeleton,microtubule organizing center
纯化	Affinity purification

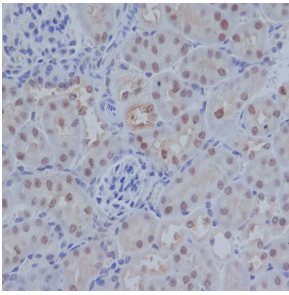
抗原信息

抗原信息	Recombinant fusion protein corresponding to Human ATF4.
序列	MTEMSFLSSEVLVGDLMSPFDQSGLGAEESLGLDDYLEVAKHFKPHGFSSDKAKAGSSEWLAVDGLVSPSNNSKEDAF SGTDWMLEKMDLKEFDLDALLGIDDLTTPDDLLTLLDTCDFAPLVQETNKQPPQTVNPIGHLPESLTKPDQVAPFTF LQPLPLSPGVLSSTPDHSFSLELGSEVDITEGDRKPDYAYVAMIPQCIKEEDTPSDNDSGICMSPESYLGSPQHSPSTRGS PNRSLPSPGVLCGSARPKPYDPPGKEMVAAKVKGEKLDKLLKMEQNKTAATRYRQKKRAEQEALTGECKELEKKNEALK ERADSLAKEIQYLKDLIEEVRKARGKRV

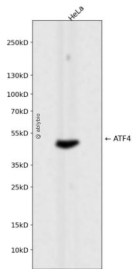
靶点信息

研究背景	This gene encodes a transcription factor that was originally identified as a widely expressed mammalian DNA binding protein that could bind a tax-responsive enhancer element in the LTR of HTLV-1. The encoded protein was also isolated and characterized as the cAMP-response element binding protein 2 (CREB-2). The protein encoded by this gene belongs to a family of DNA-binding proteins that includes the AP-1 family of transcription factors, cAMP-response element binding proteins (CREBs) and CREB-like proteins. These transcription factors share a leucine zipper region that is involved in protein-protein interactions, located C-terminal to a stretch of basic amino acids that functions as a DNA binding domain. Two alternative transcripts encoding the same protein have been described. Two pseudogenes are located on the X chromosome at q28 in a region containing a large inverted duplication.
基因ID	468
基因名	ATF4
Swiss	P18848
别名	ATF4;CREB-2;CREB2;TAXREB67;TXREB

产品验证



Immunohistochemical analysis of paraffin-embedded mouse kidney, using ATF4 Antibody.



Western blot analysis of ATF4 expressed in HeLa using ATF4 Rabbit mAb at 1:1000. Secondary antibody: HRP Goat Anti-Rabbit IgG (H+L) at 1:5000. Lysates/proteins: 30ug per lane. Blocking buffer: 5% non-fat dry milk in TBST. Detection: ECL Enhanced Kit. Exposure time: 120s.

实验步骤

访问官网浏览详情: www.ablybio.cn