

Integrin beta 1 Rabbit mAb

货号: **AYM31064**

产品信息

反应	Human
宿主	Rabbit
克隆性	Monoclonal
预测反应	
应用	WB IHC IF/ICC FC
推荐浓度	WB: 1:500 - 1:2000 IHC: 1:50 - 1:200 IF/ICC: 1:50 - 1:200 FC: 1:20 - 1:50
理论分子量	87kDa/88kDa/91kDa
实测分子量	150kDa
形式	Liquid
保存条件	Store at -20°C. Avoid freeze / thaw cycles. Buffer: PBS with 0.75% BSA,50% glycerol,pH7.3.
偶联物	Unconjugated
阳性对照	HT-1080 cells, HUVEC cells
细胞定位	Cell junction,Cell membrane,Cell projection,Cleavage furrow,Melanosome,Recycling endosome,Single-pass type I membrane protein,invadopodium membrane,lamellipodium,ruffle membrane,ruffle,sarcolemma
纯化	Affinity purification

抗原信息

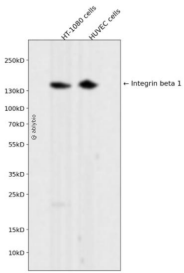
抗原信息	Recombinant fusion protein corresponding to Human Integrin beta 1.
序列	

靶点信息

研究背景	Integrins are heterodimeric proteins made up of alpha and beta subunits. At least 18 alpha and 8 beta subunits have been described in mammals. Integrin family members are membrane receptors involved in cell adhesion and recognition in a variety of processes including embryogenesis, hemostasis, tissue repair, immune response and metastatic diffusion of tumor cells. This gene encodes a beta subunit. Multiple alternatively spliced transcript variants which encode different protein isoforms have been found for this gene.
------	--

基因ID	3688
基因名	ITGB1
Swiss	P05556
别名	ITGB1; CD29; FNRB; GPIIA; MDF2; MSK12; VLA-BETA; VLAB; integrin beta-1

产品验证



Western blot analysis of Integrin beta 1 expressed in HT-1080 cells, HUVEC cells using Integrin beta 1 R abbit mAb at 1:1000. Secondary antibody: HRP Goat Anti-Rabbit IgG (H+L) at 1:5000. Lysates/proteins: 30ug per lane. Blocking buffer: 5% non-fat dry milk in TBST. Detection: ECL Enhanced Kit. Exposure time: 120s.

实验步骤

访问官网浏览详情: www.ablybio.cn