

PSME1 Rabbit mAb

货号: **AYM31057**

产品信息

反应	Human,Mouse,Rat
宿主	Rabbit
克隆性	Monoclonal
预测反应	
应用	WB IF/ICC IP
推荐浓度	WB: 1:500 - 1:2000 IF/ICC: 1:50 - 1:200 IP: 1:20 - 1:50
理论分子量	26kDa/28kDa
实测分子量	29kDa
形式	Liquid
保存条件	Store at -20°C. Avoid freeze / thaw cycles. Buffer: PBS with 0.75% BSA,50% glycerol,pH7.3.
偶联物	Unconjugated
阳性对照	MCF7,22Rv1,BT-474,Mouse spleen,Mouse liver,Mouse lung,Mouse heart,Mouse thymus
细胞定位	cytoplasm,cytosol,extracellular exosome,nucleoplasm
纯化	Affinity purification

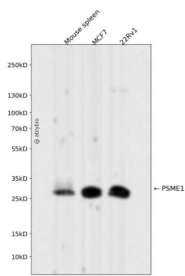
抗原信息

抗原信息	Recombinant fusion protein corresponding to Human PSME1.
序列	MAMLRVQPEAQAKVDVFRDLCTKTENLLGSYFPKKISELDAFLKEPALNEANLSNLKAPLDIPVDPVKEKEKEERKKQQE KEDKDEKKKGEDEDKGGPPCGPVNCNEKIVLLQRLKPEIKDVIEQLNLVTTWLQLQIPRIEDGNNFGVAVQEKFELMTSLH TKLEGFHTQISKYFSEKDAVTKAAKQPHVGDYRQLVHELDEAEYRDIRLMVMEIRNAYAVLYDIILKNFEKLLKPRGETKG MIY

靶点信息

研究背景	The 26S proteasome is a multicatalytic proteinase complex with a highly ordered structure composed of 2 complexes, a 20S core and a 19S regulator. The 20S core is composed of 4 rings of 28 non-identical subunits; 2 rings are composed of 7 alpha subunits and 2 rings are composed of 7 beta subunits. The 19S regulator is composed of a base, which contains 6 ATPase subunits and 2 non-ATPase subunits, and a lid, which contains up to 10 non-ATPase subunits. Proteasomes are distributed throughout eukaryotic cells at a high concentration and cleave peptides in an ATP/ubiquitin-dependent process in a non-lysosomal pathway. An essential function of a modified proteasome, the immunoproteasome, is the processing of class I MHC peptides. The immunoproteasome contains an alternate regulator, referred to as the 11S regulator or PA28, that replaces the 19S regulator. Three subunits (alpha, beta and gamma) of the 11S regulator have been identified. This gene encodes the alpha subunit of the 11S regulator, one of the two 11S subunits that is induced by gamma-interferon. Three alpha and three beta subunits combine to form a heterohexameric ring. Alternative splicing results in multiple transcript variants.
基因ID	5720
基因名	PSME1
Swiss	Q06323
别名	PSME1;HEL-S-129m;IFI51111;PA28A;PA28alpha;REGalpha

产品验证



Western blot analysis of PSME1 expressed in Mouse spleen, MCF7, 22Rv1 using PSME1 Rabbit mAb at 1:1000. Secondary antibody: HRP Goat Anti-Rabbit IgG (H+L) at 1:5000. Lysates/proteins: 30ug per lane. Blocking buffer: 5% non-fat dry milk in TBST. Detection: ECL Enhanced Kit. Exposure time: 120s.

实验步骤

访问官网浏览详情: www.ablybio.cn