

NME2 Rabbit mAb

货号: **AYM31039**

产品信息

反应	Human,Mouse,Rat
宿主	Rabbit
克隆性	Monoclonal
预测反应	
应用	WB IHC IF/ICC FC
推荐浓度	WB: 1:500 - 1:2000 IHC: 1:50 - 1:200 IF/ICC: 1:50 - 1:200 FC: 1:20 - 1:50
理论分子量	17kDa/30kDa
实测分子量	17kDa
形式	Liquid
保存条件	Store at -20°C. Avoid freeze / thaw cycles. Buffer: PBS with 0.75% BSA,50% glycerol,pH7.3.
偶联物	Unconjugated
阳性对照	PC-12,22Rv1,Mouse kidney,Mouse liver,Rat liver
细胞定位	Cell projection,Cytoplasm,Nucleus,lamellipodium,ruffle
纯化	Affinity purification

抗原信息

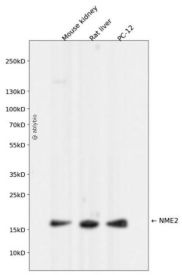
抗原信息	Recombinant fusion protein corresponding to Human NME2.
序列	MANLERTFIAIKPDGVQRGLVGEIIKRFEQKGFRLVAMKFLRASEEHLKQHYIDLKDRPFFPGLVKYMNSGPVVAMVWEGL NVVKTGRVMLGETNPADSKPGTIRGDFCIQVGRNIIHGSDSVKSAEKEISLWFKPEELVDYKSCAHDWVYE

靶点信息

研究背景	Nucleoside diphosphate kinase (NDK) exists as a hexamer composed of 'A' (encoded by NME1) and 'B' (encoded by this gene) isoforms. Multiple alternatively spliced transcript variants have been found for this gene. Read-through transcription from the neighboring upstream gene (NME1) generates naturally-occurring transcripts (NME1-NME2) that encode a fusion protein comprised of sequence sharing identity with each individual gene product.
------	--

基因ID	4831
基因名	
Swiss	P22392
别名	NME2;NDKB;NDPK-B;NDPKB;NM23-H2;NM23B;PUF

产品验证



Western blot analysis of NME2 expressed in Mouse kidney,Rat liver,PC-12 using NME2 Rabbit mAb at 1:1000. Secondary antibody: HRP Goat Anti-Rabbit IgG (H+L) at 1:5000. Lysates/proteins: 30ug per lane. Blocking buffer: 5% non-fat dry milk in TBST. Detection: ECL Enhanced Kit. Exposure time: 120s.

实验步骤

访问官网浏览详情: www.ablybio.cn