

Epac1 Rabbit mAb

货号: **AYM31034**

产品信息

反应	Human,Mouse,Rat
宿主	Rabbit
克隆性	Monoclonal
预测反应	
应用	WB IHC ICC IP
推荐浓度	WB: 1:500 - 1:2000 IHC: 1:50 - 1:200 ICC: 1:50 - 1:200 IP: 1:20 - 1:50
理论分子量	66kDa/99kDa/103kDa
实测分子量	104kDa
形式	Liquid
保存条件	Store at -20°C. Avoid freeze / thaw cycles. Buffer: PBS with 0.75% BSA,50% glycerol,pH7.3.
偶联物	Unconjugated
阳性对照	Mouse heart,Mouse thymus
细胞定位	Endomembrane system
纯化	Affinity purification

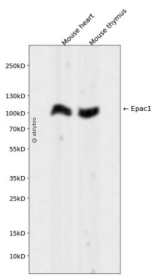
抗原信息

抗原信息	Recombinant fusion protein corresponding to Human Epac1.
序列	MVLRRMHRPRSCSYQLLLEHQRPSCIQGLRWTPLTNSEESLDFSESLEQASTERVLRAGRQLHRHLLATCPNLIRDRKYHL RLYRQCCSGRELVDGILALGLGVHSRSQVVGICQVLLDEGALCHVKHDWAFQDRDAQFYRFPGPEPEPVGTHEMEEELA EAVALLSQRGPDALLTVALRKPPGQRTDEELDLIFEELLH

靶点信息

研究背景	Guanine nucleotide exchange factor (GEF for RAP1A and RAP2A small GTPases that is activated by binding cAMP. Through simultaneous binding of PDE3B to RAPGEF3 and PIK3R6 is assembled in a signaling complex in which it activates the PI3K gamma complex and which is involved in angiogenesis. Plays a role in the modulation of the cAMP-induced dynamic control of endothelial barrier function through a pathway that is independent on Rho-mediated signaling. Required for the actin rearrangement at cell-cell junctions, such as stress fibers and junctional actin.
基因ID	10411
基因名	RAPGEF3
Swiss	O95398
别名	RAPGEF3;CAMP-GEFI;EPAC;EPAC1;HSU79275;bcm910

产品验证



Western blot analysis of Epac1 expressed in Mouse heart, Mouse thymus using Epac1 Rabbit mAb at 1:1000. Secondary antibody: HRP Goat Anti-Rabbit IgG (H+L) at 1:5000. Lysates/proteins: 30ug per lane. Blocking buffer: 5% non-fat dry milk in TBST. Detection: ECL Enhanced Kit. Exposure time: 120s.

实验步骤

访问官网浏览详情: www.ablybio.cn