

Glycophorin A (CD235a) Rabbit mAb

货号: **AYM31027**

产品信息

| | |
|-------|---|
| 反应 | Human |
| 宿主 | Rabbit |
| 克隆性 | Monoclonal |
| 预测反应 | |
| 应用 | WB IHC FC |
| 推荐浓度 | WB: 1:500 - 1:2000 IHC: 1:50 - 1:200 FC: 1:20 - 1:50 |
| 理论分子量 | 13kDa/16kDa |
| 实测分子量 | 38kDa |
| 形式 | Liquid |
| 保存条件 | Store at -20°C. Avoid freeze / thaw cycles. Buffer: PBS with 0.75% BSA,50% glycerol,pH7.3. |
| 偶联物 | Unconjugated |
| 阳性对照 | 293T,LO2,K-562 |
| 细胞定位 | Cell membrane,Single-pass type I membrane protein |
| 纯化 | Affinity purification |

抗原信息

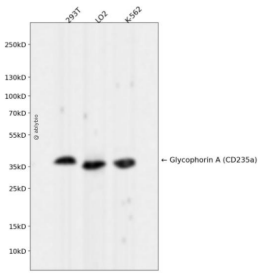
| | |
|------|---|
| 抗原信息 | Recombinant fusion protein corresponding to Human Glycophorin A (CD235a). |
| 序列 | SSTTGVAMHTSTSSSVTKSYISSQTNDTHKRDTYAATPRAHEVSEISVRTVYPPEEETGERVQLAHHFSEPE |

靶点信息

| | |
|------|---|
| 研究背景 | Glycophorins A (GYPA) and B (GYPB) are major sialoglycoproteins of the human erythrocyte membrane which bear the antigenic determinants for the MN and Ss blood groups. In addition to the M or N and S or s antigens that commonly occur in all populations, about 40 related variant phenotypes have been identified. These variants include all the variants of the Miltenberger complex and several isoforms of Sta, as well as Dantu, Sat, He, Mg, and deletion variants Ena, S-s-U- and Mk. Most of the variants are the result of gene recombinations between GYPA and GYPB. |
|------|---|

| | |
|-------|--|
| 基因ID | 2993 |
| 基因名 | GYPA |
| Swiss | P02724 |
| 别名 | GYPA;CD235a;GPA;GPErik;GPSAT;HGpMiV;HGpMiXI;HGpSta(C);MN;MNS;PAS-2 |

产品验证



Western blot analysis of Glycophorin A (CD235a) expressed in 293T, LO2, K-562 using Glycophorin A (CD235a) Rabbit mAb at 1:1000. Secondary antibody: HRP Goat Anti-Rabbit IgG (H+L) at 1:5000. Lysates/proteins: 30ug per lane. Blocking buffer: 5% non-fat dry milk in TBST. Detection: ECL Enhanced Kit. Exposure time: 120s.

实验步骤

访问官网浏览详情: www.ablybio.cn