

CD26 Rabbit mAb

货号: **AYM31023**

产品信息

反应	Human,Mouse,Rat
宿主	Rabbit
克隆性	Monoclonal
预测反应	
应用	WB
推荐浓度	WB: 1:500 - 1:2000
理论分子量	110kDa
实测分子量	110kDa
形式	Liquid
保存条件	Store at -20°C. Avoid freeze / thaw cycles. Buffer: PBS with 0.75% BSA,50% glycerol,pH7.3.
偶联物	Unconjugated
阳性对照	U-937,Mouse liver,Rat lung,Rat liver,Rat kidney
细胞定位	Apical cell membrane,Cell junction,Cell membrane,Cell projection,Membrane raft,Secreted,Single-pass type II membrane protein,invadopodium membrane,lamellipodium membrane
纯化	Affinity purification

抗原信息

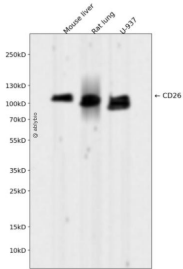
抗原信息	Recombinant fusion protein corresponding to Human CD26.
序列	TERYMGLPTPEDNLDHYRNSTVMSRAENFKQVEYLLIHGTADDNVHFQQSAQISKALVDVGVDFQAMWYTDEDHGIAS STAHQHIYTHMSHFQCFSLP

靶点信息

研究背景	The protein encoded by this gene is identical to adenosine deaminase complexing protein-2, and to the T-cell activation antigen CD26. It is an intrinsic membrane glycoprotein and a serine exopeptidase that cleaves X-proline dipeptides from the N-terminus of polypeptides. [provided by RefSeq, Jul 2008]
基因ID	1803

基因名	DPP4
Swiss	P27487
别名	ADABP; ADCP2; CD26; DPPIV; TP103

产品验证



Western blot analysis of CD26 expressed in Mouse liver,Rat lung,U-937 using CD26 Rabbit mAb at 1:10 00. Secondary antibody: HRP Goat Anti-Rabbit IgG (H+L) at 1:5000. Lysates/proteins: 30ug per lane. Bl ocking buffer: 5% non-fat dry milk in TBST. Detection: ECL Enhanced Kit. Exposure time: 120s.

实验步骤

访问官网浏览详情: www.ablybio.cn