

# Glutaminase Rabbit mAb

货号: **AYM31013**

## 产品信息

反应	Human,Mouse,Rat
宿主	Rabbit
克隆性	Monoclonal
预测反应	
应用	WB IHC IF/ICC
推荐浓度	<b>WB:</b> 1:500 - 1:2000 <b>IHC:</b> 1:50 - 1:200 <b>IF/ICC:</b> 1:50 - 1:200
理论分子量	17kDa/65kDa/73kDa
实测分子量	73kDa
形式	Liquid
保存条件	Store at -20°C. Avoid freeze / thaw cycles. Buffer: PBS with 0.75% BSA,50% glycerol,pH7.3.
偶联物	Unconjugated
阳性对照	U-251MG,NIH/3T3,Mouse brain,Rat kidney
细胞定位	Cytoplasm,Mitochondrion,cytosol
纯化	Affinity purification

## 抗原信息

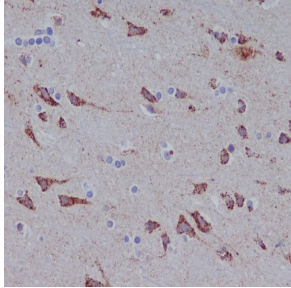
抗原信息	Recombinant fusion protein corresponding to Human Glutaminase.
序列	KVNPFPKDRWNNTPMDEALHFGHHDVFKILQEYQVQYTPQGSDNGKENQTVHKNLDGLL

## 靶点信息

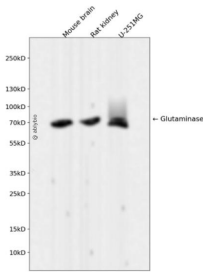
研究背景	This gene encodes the K-type mitochondrial glutaminase. The encoded protein is an phosphate-activated amidohydrolase that catalyzes the hydrolysis of glutamine to glutamate and ammonia. This protein is primarily expressed in the brain and kidney plays an essential role in generating energy for metabolism, synthesizing the brain neurotransmitter glutamate and maintaining acid-base balance in the kidney. Alternative splicing results in multiple transcript variants.
基因ID	2744

基因名	GLS
Swiss	O94925
别名	GLS;AAD20;GAC;GAM;GLS1;KGA

## 产品验证



Immunohistochemical analysis of paraffin-embedded human brain, using Glutaminase Antibody



Western blot analysis of Glutaminase expressed in Mouse brain,Rat kidney,U-251MG using Glutaminase Rabbit mAb at 1:1000. Secondary antibody: HRP Goat Anti-Rabbit IgG (H+L) at 1:5000 . Lysates/proteins: 30ug per lane. Blocking buffer: 5% non-fat dry milk in TBST. Detection: ECL Enhanced Kit. Exposure time: 120s.

## 实验步骤

访问官网浏览详情: [www.ablybio.cn](http://www.ablybio.cn)