

MUTA Rabbit mAb

货号: **AYM31011**

产品信息

反应	Human,Mouse,Rat
宿主	Rabbit
克隆性	Monoclonal
预测反应	
应用	WB IHC IF/ICC
推荐浓度	WB: 1:500 - 1:2000 IHC: 1:50 - 1:200 IF/ICC: 1:50 - 1:200
理论分子量	78kDa
实测分子量	78kDa
形式	Liquid
保存条件	Store at -20°C. Avoid freeze / thaw cycles. Buffer: PBS with 0.75% BSA,50% glycerol,pH7.3.
偶联物	Unconjugated
阳性对照	HeLa,293T,HepG2,Mouse liver,Mouse kidney,Mouse heart,Rat liver,Rat kidney,Rat heart
细胞定位	Mitochondrion matrix
纯化	Affinity purification

抗原信息

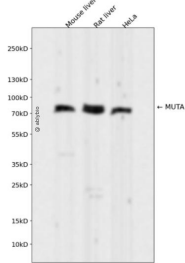
抗原信息	Recombinant fusion protein corresponding to Human MUTA.
序列	VEVLAI DNTSVRNRQIEK LKKIKSSRDQALAE RCLAALTECAASGDGNILALAVDASRARCTVGEITDALKKVFGEHKANDR MVSGAYRQEFGESKEITSA

靶点信息

研究背景	This gene encodes the mitochondrial enzyme methylmalonyl Coenzyme A mutase. In humans, the product of this gene is a vitamin B12-dependent enzyme which catalyzes the isomerization of methylmalonyl-Co A to succinyl-CoA, while in other species this enzyme may have different functions. Mutations in this gene may lead to various types of methylmalonic aciduria.
基因ID	4594

基因名	MUT
Swiss	P22033
别名	MUT; MCM; methylmalonyl-CoA mutase

产品验证



Western blot analysis of MUTA expressed in Mouse liver,Rat liver,HeLa using MUTA Rabbit mAb at 1:1000. Secondary antibody: HRP Goat Anti-Rabbit IgG (H+L) at 1:5000. Lysates/proteins: 30ug per lane. Blocking buffer: 5% non-fat dry milk in TBST. Detection: ECL Enhanced Kit. Exposure time: 120s.

实验步骤

访问官网浏览详情: www.ablybio.cn