

# Cathepsin D Rabbit mAb

货号: **AYM31009**

## 产品信息

反应	Human,Mouse
宿主	Rabbit
克隆性	Monoclonal
预测反应	
应用	WB IHC ICC IP FC
推荐浓度	<b>WB:</b> 1:500 - 1:2000 <b>IHC:</b> 1:50 - 1:200 <b>ICC:</b> 1:50 - 1:200 <b>IP:</b> 1:20 - 1:50 <b>FC:</b> 1:20 - 1:50
理论分子量	46kDa/28kDa
实测分子量	46kDa/28kDa
形式	Liquid
保存条件	Store at -20°C. Avoid freeze / thaw cycles. Buffer: PBS with 0.75% BSA,50% glycerol,pH7.3.
偶联物	Unconjugated
阳性对照	A375,HepG2,MCF7,Mouse brain,Mouse kidney,Mouse spleen
细胞定位	Lysosome,Melanosome,Secreted,extracellular space
纯化	Affinity purification

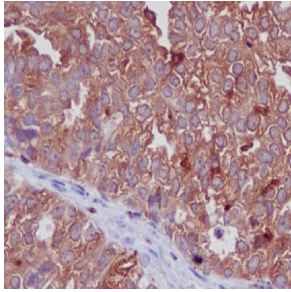
## 抗原信息

抗原信息	Recombinant fusion protein corresponding to Human Cathepsin D.
序列	KAIGAVPLIQGEYMIPCEKVSTLPAILTKLGGKGYKLSPEYTLKVSQAGKTLCLSGFMGMDIPPPSGPLWILGDVFIGRYYT VFDRDNNRVGFEEAARL

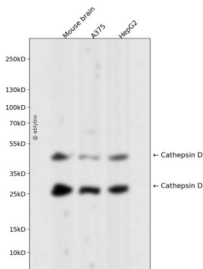
## 靶点信息

研究背景	This gene encodes a member of the A1 family of peptidases. The encoded preproprotein is proteolytically processed to generate multiple protein products. These products include the cathepsin D light and heavy chains, which heterodimerize to form the mature enzyme. This enzyme exhibits pepsin-like activity and plays a role in protein turnover and in the proteolytic activation of hormones and growth factors. Mutations in this gene play a causal role in neuronal ceroid lipofuscinosis-10 and may be involved in the pathogenesis of several other diseases, including breast cancer and possibly Alzheimer's disease. [provided by RefSeq, Nov 2015]
基因ID	1509
基因名	CTSD
Swiss	P07339
别名	CLN10;CPSD;HEL-S-130P;Cathepsin D;CTSD

## 产品验证



Immunohistochemical analysis of paraffin-embedded human ovarian cancer, using Cathepsin D Antibody.



Western blot analysis of Cathepsin D expressed in Mouse brain, A375, HepG2 using Cathepsin D Rabbit mAb at 1:1000. Secondary antibody: HRP Goat Anti-Rabbit IgG (H+L) at 1:5000. Lysates /proteins: 30ug per lane. Blocking buffer: 5% non-fat dry milk in TBST. Detection: ECL Enhanced Kit. Exposure time: 120s.

## 实验步骤

访问官网浏览详情: [www.ablybio.cn](http://www.ablybio.cn)