

SGK1 Rabbit mAb

货号: **AYM31008**

产品信息

反应	Human,Mouse,Rat
宿主	Rabbit
克隆性	Monoclonal
预测反应	
应用	WB IHC IP FC
推荐浓度	WB: 1:500 - 1:2000 IHC: 1:50 - 1:200 IP: 1:20 - 1:50 FC: 1:20 - 1:50
理论分子量	47kDa/48kDa/50kDa/52kDa/59kDa
实测分子量	57kDa
形式	Liquid
保存条件	Store at -20°C. Avoid freeze / thaw cycles. Buffer: PBS with 0.75% BSA,50% glycerol,pH7.3.
偶联物	Unconjugated
阳性对照	HeLa,293T,BxPC-3,Mouse brain
细胞定位	Cell membrane,Cytoplasm,Endoplasmic reticulum membrane,Mitochondrion,Nucleus
纯化	Affinity purification

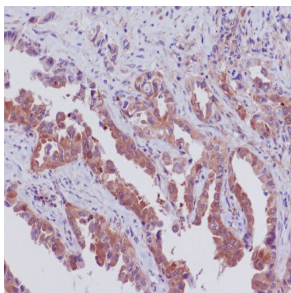
抗原信息

抗原信息	Recombinant fusion protein corresponding to Human SGK1.
序列	TPEYLAPEVLHKQPYDRTVDWWCLGAVLYEMLYGLPPFYSRNTAEMYDNILNKPLQLKPNITNSARHLLLEGLLQKDRTKRL GAKDDFMEIKSHVFFSLINWDDLINKKITPPFNPNVSGPNDLRHFDFEFTPEEVPNSIGKSPDVLVTASVKEAAEAFLGFS YAPPTDSFL

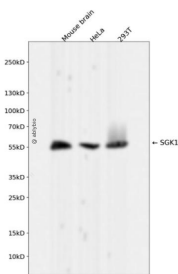
靶点信息

研究背景	This gene encodes a serine/threonine protein kinase that plays an important role in cellular stress response. This kinase activates certain potassium, sodium, and chloride channels, suggesting an involvement in the regulation of processes such as cell survival, neuronal excitability, and renal sodium excretion. High levels of expression of this gene may contribute to conditions such as hypertension and diabetic nephropathy. Several alternatively spliced transcript variants encoding different isoforms have been noted for this gene.
基因ID	6446
基因名	SGK1
Swiss	O00141
别名	SGK1;SGK

产品验证



Immunohistochemical analysis of paraffin-embedded human lung cancer, using SGK1 Antibody.



Western blot analysis of SGK1 expressed in Mouse brain, HeLa, 293T using SGK1 Rabbit mAb at 1:1000. Secondary antibody: HRP Goat Anti-Rabbit IgG (H+L) at 1:5000. Lysates/proteins: 30ug per lane. Blocking buffer: 5% non-fat dry milk in TBST. Detection: ECL Enhanced Kit. Exposure time: 120s.

实验步骤

访问官网浏览详情: www.ablybio.cn