

BPI Rabbit mAb

货号: **AYM30995**

产品信息

反应	Human
宿主	Rabbit
克隆性	Monoclonal
预测反应	
应用	WB IF/ICC FC
推荐浓度	WB: 1:500 - 1:2000 IF/ICC: 1:50 - 1:200 FC: 1:20 - 1:50
理论分子量	53kDa
实测分子量	54kDa
形式	Liquid
保存条件	Store at -20°C. Avoid freeze / thaw cycles. Buffer: PBS with 0.75% BSA,50% glycerol,pH7.3.
偶联物	Unconjugated
阳性对照	Jurkat,HepG2,SK-Hep1,Mouse liver,Mouse thymus
细胞定位	Cytoplasmic granule membrane,Secreted
纯化	Affinity purification

抗原信息

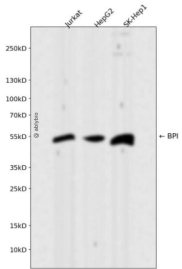
抗原信息	Recombinant fusion protein corresponding to Human BPI.
序列	AETLDVQMKGEFYSENHHNPPPFAPPVMEFPAAHDRMVYLGLSDYFFNTAGLVYQEAGVLKMTLRDDMIPKESKFRLLTK FFGTFLPEVAKKFPNMKIQHVSASTPPHLSVQPTGLTFYPAVDVQAFVLPNSSLASLFLIGMHTTGSMEVSAESNRLVGE LKLDRLLLLKHSNIGPFPVELLQDIMNYIVPILVLPVNEKLQKGFPLTPARVQLYNNVVLQPHQNFLFGADVVK

靶点信息

研究背景	This gene encodes a lipopolysaccharide binding protein. It is associated with human neutrophil granules and has antimicrobial activity against gram-negative organisms.
基因ID	671

基因名	BPI
Swiss	P17213
别名	BPI;BPIFD1;rBPI

产品验证



Western blot analysis of BPI expressed in Jurkat, HepG2, SK-Hep1 using BPI Rabbit mAb at 1:1000. Secondary antibody: HRP Goat Anti-Rabbit IgG (H+L) at 1:5000. Lysates/proteins: 30ug per lane. Blocking buffer: 5% non-fat dry milk in TBST. Detection: ECL Enhanced Kit. Exposure time: 120s.

实验步骤

访问官网浏览详情: www.ablybio.cn