

PSMD4 Rabbit mAb

货号: **AYM30990**

产品信息

反应	Human,Mouse,Rat
宿主	Rabbit
克隆性	Monoclonal
预测反应	
应用	WB IP FC
推荐浓度	WB: 1:500 - 1:2000 IP: 1:20 - 1:50 FC: 1:20 - 1:50
理论分子量	28kDa/40kDa
实测分子量	50kDa
形式	Liquid
保存条件	Store at -20°C. Avoid freeze / thaw cycles. Buffer: PBS with 0.75% BSA,50% glycerol,pH7.3.
偶联物	Unconjugated
阳性对照	HUVEC,MCF7
细胞定位	cytosol,nucleoplasm,nucleus
纯化	Affinity purification

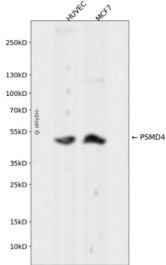
抗原信息

抗原信息	Recombinant fusion protein corresponding to Human PSMD4.
序列	MVLESTMVCVDNSEYMRNGDFLPTRLQAQQDAVNIVCHSKTRSNPENNVGLITLANDCEVLTTLTPTDGRILSKLHTVQPK GKITFCTGIRVAHLALKHRQGKNHKMRIAIFVGSVEDNEKDLVKLAKRLKKEKVNVDIINFGEEVNTEKLTAFVNTLNGKD GTGSHLVTVPPGPSLADALISSPILAGEGGAMLGLGASDFEFGVDPSADPELALALRVSMEEQRQRQEEEEARRAAAASAA EAGIATTGTEDSDALLKMTISQQEFGRGLPDLSSMTEEEQIAYAMQMSLQGAIEFGQAESADIDASSAMDTSEPAKEED DYDVMQDPEFLQSVLENLPGVDPNNEAIRNAMGSLASQATKDGKKDKKEEDKK

靶点信息

研究背景	The 26S proteasome is a multicatalytic proteinase complex with a highly ordered structure composed of 2 complexes, a 20S core and a 19S regulator. The 20S core is composed of 4 rings of 28 non-identical subunits; 2 rings are composed of 7 alpha subunits and 2 rings are composed of 7 beta subunits. The 19S regulator is composed of a base, which contains 6 ATPase subunits and 2 non-ATPase subunits, and a lid, which contains up to 10 non-ATPase subunits. Proteasomes are distributed throughout eukaryotic cells at a high concentration and cleave peptides in an ATP/ubiquitin-dependent process in a non-lysosomal pathway. An essential function of a modified proteasome, the immunoproteasome, is the processing of class I MHC peptides. This gene encodes one of the non-ATPase subunits of the 19S regulator lid. Pseudogenes have been identified on chromosomes 10 and 21.
基因ID	5710
基因名	PSMD4
Swiss	P55036
别名	PSMD4;AF;AF-1;ASF;MCB1;Rpn10;S5A;pUB-R5

产品验证



Western blot analysis of PSMD4 expressed in HUVEC, MCF7 using PSMD4 Rabbit mAb at 1:1000. Secondary antibody: HRP Goat Anti-Rabbit IgG (H+L) at 1:5000. Lysates/proteins: 30ug per lane. Blocking buffer: 5% non-fat dry milk in TBST. Detection: ECL Enhanced Kit. Exposure time: 120s.

实验步骤

访问官网浏览详情: www.ablybio.cn