

pan Cadherin Rabbit mAb

货号: **AYM30988**

产品信息

反应	Human,Mouse,Rat
宿主	Rabbit
克隆性	Monoclonal
预测反应	
应用	WB IHC IF/ICC IP FC
推荐浓度	WB: 1:500 - 1:2000 IHC: 1:50 - 1:200 IF/ICC: 1:50 - 1:200 IP: 1:20 - 1:50 FC: 1:20 - 1:50
理论分子量	140kDa
实测分子量	140kDa
形式	Liquid
保存条件	Store at -20°C. Avoid freeze / thaw cycles. Buffer: PBS with 0.75% BSA,50% glycerol,pH7.3.
偶联物	Unconjugated
阳性对照	HeLa,Mouse liver
细胞定位	actin cytoskeleton,adherens junction,apical junction complex,cell junction,cytoplasm,cytoplasmic side of plasma membrane,endosome,extracellular exosome,extracellular region,flotillin complex,glutamatergic synapse,lateral plasma membrane,perinuclear region of cytoplasm,plasma membrane,trans-Golgi network
纯化	Affinity purification

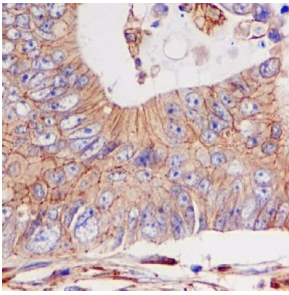
抗原信息

抗原信息	Recombinant fusion protein corresponding to Human pan Cadherin .
序列	

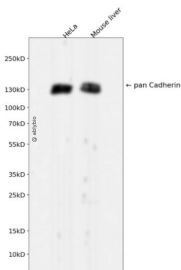
靶点信息

研究背景	This gene encodes a classical cadherin of the cadherin superfamily. Alternative splicing results in multiple transcript variants, at least one of which encodes a preproprotein that is proteolytically processed to generate the mature glycoprotein. This calcium-dependent cell-cell adhesion protein is comprised of five extracellular cadherin repeats, a transmembrane region and a highly conserved cytoplasmic tail. Mutations in this gene are correlated with gastric, breast, colorectal, thyroid and ovarian cancer. Loss of function of this gene is thought to contribute to cancer progression by increasing proliferation, invasion, and/or metastasis. The ectodomain of this protein mediates bacterial adhesion to mammalian cells and the cytoplasmic domain is required for internalization. This gene is present in a gene cluster with other members of the cadherin family on chromosome 16. [provided by RefSeq, Nov 2015]
基因ID	999,1000,1001,1001,1002,12561
基因名	CDH1,CDH2,CDH3,CDH3,CDH4
Swiss	P12830/P19022/P22223/P33151/P55283/P39038
别名	Arc-1; CD324; CDHE; ECAD; LCAM; UVO

产品验证



Immunohistochemical analysis of paraffin-embedded colon cancer, using pan Cadherin Antibody.



Western blot analysis of pan Cadherin expressed in HeLa, Mouse liver using pan Cadherin Rabbit mAb at 1:1000. Secondary antibody: HRP Goat Anti-Rabbit IgG (H+L) at 1:5000. Lysates/proteins: 30ug per lane. Blocking buffer: 5% non-fat dry milk in TBST. Detection: ECL Enhanced Kit. Exposure time: 120s.

实验步骤

访问官网浏览详情: www.ablybio.cn