

Cdc37 Rabbit mAb

货号: **AYM30985**

产品信息

反应	Human,Mouse,Rat
宿主	Rabbit
克隆性	Monoclonal
预测反应	
应用	WB IHC IP FC
推荐浓度	WB: 1:500 - 1:2000 IHC: 1:50 - 1:200 IP: 1:20 - 1:50 FC: 1:20 - 1:50
理论分子量	44kDa
实测分子量	44kDa
形式	Liquid
保存条件	Store at -20°C. Avoid freeze / thaw cycles. Buffer: PBS with 0.75% BSA,50% glycerol,pH7.3.
偶联物	Unconjugated
阳性对照	Raji,HeLa,HepG2,BT474,HT-1080
细胞定位	Cytoplasm
纯化	Affinity purification

抗原信息

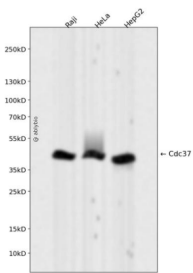
抗原信息	Recombinant fusion protein corresponding to Human Cdc37.
序列	MVDYSVWDHIEVSDDDETHPNIDTASLFRWRHQARVERMEQFQKEKEELDRGCRECKRKRVAECQRKLKELEVAEGGK AELERLQAEAQQLRKEERSWEQKLEEMRKKESMPWNVDTLSDGFSKSMVNTKPEKTEEDSEEVREQKHKTFVEKYEK QIK

靶点信息

研究背景	The protein encoded by this gene is highly similar to Cdc 37, a cell division cycle control protein of <i>Saccharomyces cerevisiae</i> . This protein is a molecular chaperone with specific function in cell signal transduction. It has been shown to form complex with Hsp90 and a variety of protein kinases including CDK4, CDK6, SRC, RAF-1, MOK, as well as eIF2 alpha kinases. It is thought to play a critical role in directing Hsp90 to its target kinases.
------	--

基因ID	11140
基因名	CDC37
Swiss	Q16543
别名	CDC37;P50CDC37

产品验证



Western blot analysis of Cdc37 expressed in Raji, HeLa, HepG2 using Cdc37 Rabbit mAb at 1:1000. Secondary antibody: HRP Goat Anti-Rabbit IgG (H+L) at 1:5000. Lysates/proteins: 30ug per lane. Blocking buffer: 5% non-fat dry milk in TBST. Detection: ECL Enhanced Kit. Exposure time: 120s.

实验步骤

访问官网浏览详情: www.ablybio.cn