

# APOL1 Rabbit mAb

货号: **AYM30980**

## 产品信息

反应	Human
宿主	Rabbit
克隆性	Monoclonal
预测反应	
应用	WB IF/ICC IP FC
推荐浓度	<b>WB:</b> 1:500 - 1:2000 <b>IF/ICC:</b> 1:50 - 1:200 <b>IP:</b> 1:20 - 1:50 <b>FC:</b> 1:20 - 1:50
理论分子量	44kDa
实测分子量	44kDa
形式	Liquid
保存条件	Store at -20°C. Avoid freeze / thaw cycles. Buffer: PBS with 0.75% BSA,50% glycerol,pH7.3.
偶联物	Unconjugated
阳性对照	HepG2,LO2,Human plasma
细胞定位	Secreted
纯化	Affinity purification

## 抗原信息

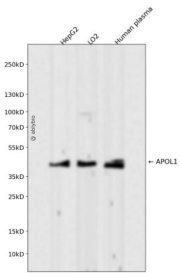
抗原信息	Recombinant fusion protein corresponding to Human APOL1.
序列	RPRVTEPISAESGEQVERVNEPSILEMSRGVKLTDVAPVSFFLVLDVVYLVYESKHLHEGAKSETAEELKKVAQELEEKLNIL NNNYKILQADQEL

## 靶点信息

研究背景	This gene encodes a secreted high density lipoprotein which binds to apolipoprotein A-I. Apolipoprotein A-I is a relatively abundant plasma protein and is the major apoprotein of HDL. It is involved in the formation of most cholesteryl esters in plasma and also promotes efflux of cholesterol from cells. This apolipoprotein L family member may play a role in lipid exchange and transport throughout the body, as well as in reverse cholesterol transport from peripheral cells to the liver. Several different transcript variants encoding different isoforms have been found for this gene. [provided by RefSeq, Nov 2008]
------	-------------------------------------------------------------------------------------------------------------------------------------------------------------------------------------------------------------------------------------------------------------------------------------------------------------------------------------------------------------------------------------------------------------------------------------------------------------------------------------------------------------------------------------------------------------------------------------------------------------------------------------------

基因ID	8542
基因名	APOL1
Swiss	O14791
别名	APO-L; APOL; APOL-I; FSGS4

### 产品验证



Western blot analysis of APOL1 expressed in HepG2, LO2, Human plasma using APOL1 Rabbit mAb at 1:1000. Secondary antibody: HRP Goat Anti-Rabbit IgG (H+L) at 1:5000. Lysates/proteins: 30ug per lane. Blocking buffer: 5% non-fat dry milk in TBST. Detection: ECL Enhanced Kit. Exposure time: 120s.

### 实验步骤

访问官网浏览详情: [www.ablybio.cn](http://www.ablybio.cn)