

Monoamine Oxidase B Rabbit mAb

货号: **AYM30972**

产品信息

反应	Human
宿主	Rabbit
克隆性	Monoclonal
预测反应	
应用	WB IHC
推荐浓度	WB: 1:500 - 1:2000 IHC: 1:50 - 1:200
理论分子量	59kDa
实测分子量	59kDa
形式	Liquid
保存条件	Store at -20°C. Avoid freeze / thaw cycles. Buffer: PBS with 0.75% BSA, 50% glycerol, pH7.3.
偶联物	Unconjugated
阳性对照	HeLa, HepG2
细胞定位	Cytoplasmic side, Mitochondrion outer membrane, Single-pass type IV membrane protein
纯化	Affinity purification

抗原信息

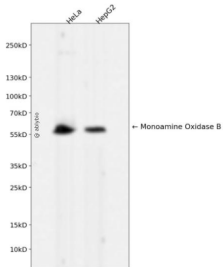
抗原信息	Recombinant fusion protein corresponding to Human Monoamine Oxidase B.
序列	MSNKCDVVVGGGISGMAAAKLLHDSGLNVVVLEARDRVGGRTYTLRNQVKYVDLGGSYVGPTQNRILRLAKELGLET YKVNEVERLIHHVKGKSYFPR

靶点信息

研究背景	The protein encoded by this gene belongs to the flavin monoamine oxidase family. It is a enzyme located in the mitochondrial outer membrane. It catalyzes the oxidative deamination of biogenic and xenobiotic amines and plays an important role in the metabolism of neuroactive and vasoactive amines in the central nervous system and peripheral tissues. This protein preferentially degrades benzylamine and phenylethylamine. [provided by RefSeq, Jul 2008]
基因ID	4129

基因名	MAOB
Swiss	P27338
别名	MAOB; monoamine oxidase B

产品验证



Western blot analysis of Monoamine Oxidase B expressed in HeLa, HepG2 using Monoamine Oxidase B Rabbit mAb at 1:1000. Secondary antibody: HRP Goat Anti-Rabbit IgG (H+L) at 1:5000. Lysates/proteins: 30ug per lane. Blocking buffer: 5% non-fat dry milk in TBST. Detection: ECL Enhanced Kit. Exposure time: 120s.

实验步骤

访问官网浏览详情: www.ablybio.cn