

# CARD11 Rabbit mAb

货号: **AYM30971**

## 产品信息

反应	Human,Mouse
宿主	Rabbit
克隆性	Monoclonal
预测反应	
应用	WB IF/ICC
推荐浓度	<b>WB:</b> 1:500 - 1:2000 <b>IF/ICC:</b> 1:50 - 1:200
理论分子量	133kDa
实测分子量	133kDa
形式	Liquid
保存条件	Store at -20°C. Avoid freeze / thaw cycles. Buffer: PBS with 0.75% BSA,50% glycerol,pH7.3.
偶联物	Unconjugated
阳性对照	Raji,Jurkat,Mouse thymus
细胞定位	Cytoplasm,Membrane raft
纯化	Affinity purification

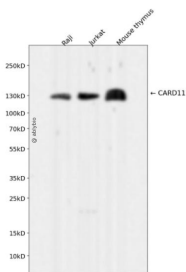
## 抗原信息

抗原信息	Recombinant fusion protein corresponding to Human CARD11.
序列	AKTLVQRLNLSGGAMEFTICKSDIVTRDEFLRRQKTETIYSREKNPNAFECIAPANIEAVAANKKHCLLEAGIGCTRDLIKSNI YPIVLFIRVCEKNIKRFRKLLPRPETEEEEFLRVCRLEKELEALPCLYATVEPDMWGSVEELLRVVKDKIGEEQRKTIWVDEDQ L

## 靶点信息

研究背景	The protein encoded by this gene belongs to the membrane-associated guanylate kinase (MAGUK) family, a class of proteins that functions as molecular scaffolds for the assembly of multiprotein complexes at specialized regions of the plasma membrane. This protein is also a member of the CARD protein family, which is defined by carrying a characteristic caspase-associated recruitment domain (CARD). This protein has a domain structure similar to that of CARD14 protein. The CARD domains of both proteins have been shown to specifically interact with BCL10, a protein known to function as a positive regulator of cell apoptosis and NF-kappaB activation. When expressed in cells, this protein activated NF-kappaB and induced the phosphorylation of BCL10.
基因ID	84433
基因名	CARD11
Swiss	Q9BXL7
别名	CARD11;BENTA;BIMP3;CARMA1;IMD11;PPBL

## 产品验证



Western blot analysis of CARD11 expressed in Raji, Jurkat, Mouse thymus using CARD11 Rabbit mAb at 1:1000. Secondary antibody: HRP Goat Anti-Rabbit IgG (H+L) at 1:5000. Lysates/proteins: 30ug per lane. Blocking buffer: 5% non-fat dry milk in TBST. Detection: ECL Enhanced Kit. Exposure time: 120s.

## 实验步骤

访问官网浏览详情: [www.ablybio.cn](http://www.ablybio.cn)