

# MSH2 Rabbit mAb

货号: **AYM30967**

## 产品信息

反应	Human
宿主	Rabbit
克隆性	Monoclonal
预测反应	
应用	WB FC
推荐浓度	<b>WB:</b> 1:500 - 1:2000 <b>FC:</b> 1:20 - 1:50
理论分子量	105kDa
实测分子量	105kDa
形式	Liquid
保存条件	Store at -20°C. Avoid freeze / thaw cycles. Buffer: PBS with 0.75% BSA, 50% glycerol, pH7.3.
偶联物	Unconjugated
阳性对照	HeLa, 293T, A-549, NIH/3T3, C6, Mouse testis
细胞定位	Nucleus
纯化	Affinity purification

## 抗原信息

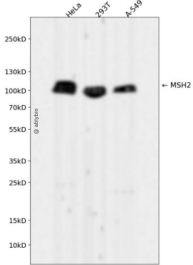
抗原信息	Recombinant fusion protein corresponding to Human MSH2.
序列	MAVQPKETLQLESAAEVGFVRRFFQGMPEKPTTTVRLFDRGDFYTAHGEDALLAAREVFKTQGVIKYMGPAGAKNLQSVVLSKMNFEFVKDLLLLVRQYRV

## 靶点信息

研究背景	This locus is frequently mutated in hereditary nonpolyposis colon cancer (HNPCC). When cloned, it was discovered to be a human homolog of the E. coli mismatch repair gene mutS, consistent with the characteristic alterations in microsatellite sequences (RER+ phenotype) found in HNPCC. Two transcript variants encoding different isoforms have been found for this gene. [provided by RefSeq, Apr 2012]
基因ID	4436

基因名	MSH2
Swiss	P43246
别名	COCA1; FCC1; HNPCC; HNPCC1; LCFS2

## 产品验证



Western blot analysis of MSH2 expressed in HeLa,293T,A-549 using MSH2 Rabbit mAb at 1:1000. Secondary antibody: HRP Goat Anti-Rabbit IgG (H+L) at 1:5000. Lysates/proteins: 30ug per lane. Blocking buffer: 5% non-fat dry milk in TBST. Detection: ECL Enhanced Kit. Exposure time: 120s.

## 实验步骤

访问官网浏览详情: [www.ablybio.cn](http://www.ablybio.cn)