

# Meckelin Rabbit mAb

货号: **AYM30963**

## 产品信息

|       |   |
|-------|---|
| 反应    | Human,Mouse,Rat   |
| 宿主    | Rabbit  |
| 克隆性   | Monoclonal  |
| 预测反应  |   |
| 应用    | WB IHC IF/ICC FC  |
| 推荐浓度  | <b>WB:</b> 1:500 - 1:2000<br><b>IHC:</b> 1:50 - 1:200<br><b>IF/ICC:</b> 1:50 - 1:200<br><b>FC:</b> 1:20 - 1:50    |
| 理论分子量 | 103kDa/111kDa   |
| 实测分子量 | 112kDa  |
| 形式    | Liquid  |
| 保存条件  | Store at -20°C. Avoid freeze / thaw cycles.<br>Buffer: PBS with 0.75% BSA,50% glycerol,pH7.3.                     |
| 偶联物   | Unconjugated  |
| 阳性对照  | Mouse brain,Rat brain,Rat kidney  |
| 细胞定位  | Cell membrane,Cytoplasm,Endoplasmic reticulum membrane,Multi-pass membrane protein,cilium basal body,cytoskeleton |
| 纯化    | Affinity purification   |

## 抗原信息

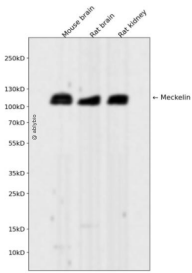
|      |  |
|------|--|
| 抗原信息 | Recombinant fusion protein corresponding to Human Meckelin.  |
| 序列   | LSHKCFGYIHDRSVHGHADTNMEEMNMLKREAENLCSQRGLVPNTDGQTFEIAISNQMRQHYDRIHETLIRKNGPARLLSSASTFEQSIKAYHMMNKFLGSFIDHVKEMDYFIKDKLLLERILGMEFMPEKSFIFYNDEGYSSVLYYGNEATLL |

## 靶点信息

|      |   |
|------|---|
| 研究背景 | The protein encoded by this gene localizes to the primary cilium and to the plasma membrane. The gene functions in centriole migration to the apical membrane and formation of the primary cilium. Multiple transcript variants encoding different isoforms have been found for this gene. Defects in this gene are a cause of Meckel syndrome type 3 (MKS3) and Joubert syndrome type 6 (JBTS6). |
|------|---|

|       |   |
|-------|---|
| 基因ID  | 91147   |
| 基因名   | TMEM67  |
| Swiss | Q5HYA8  |
| 别名    | TMEM67;JBTS6;MECKELIN;MKS3;NPHP11;TNEM67;meckelin |

## 产品验证



Western blot analysis of Meckelin expressed in Mouse brain,Rat brain,Rat kidney using Meckelin Rabbit mAb at 1:1000. Secondary antibody: HRP Goat Anti-Rabbit IgG (H+L) at 1:5000. Lysates/proteins: 30u g per lane. Blocking buffer: 5% non-fat dry milk in TBST. Detection: ECL Enhanced Kit. Exposure time: 120s.

## 实验步骤

访问官网浏览详情: [www.ablybio.cn](http://www.ablybio.cn)