

ABI2 Rabbit mAb

货号: **AYM30952**

产品信息

反应	Human,Mouse,Rat
宿主	Rabbit
克隆性	Monoclonal
预测反应	
应用	WB IHC IF/ICC
推荐浓度	WB: 1:500 - 1:2000 IHC: 1:50 - 1:200 IF/ICC: 1:50 - 1:200
理论分子量	44kDa/52kDa/54kDa/55kDa
实测分子量	75kDa
形式	Liquid
保存条件	Store at -20°C. Avoid freeze / thaw cycles. Buffer: PBS with 0.75% BSA,50% glycerol,pH7.3.
偶联物	Unconjugated
阳性对照	U-251MG,Mouse brain
细胞定位	Cell projection,Cytoplasm,cytoskeleton,filopodium,lamellipodium
纯化	Affinity purification

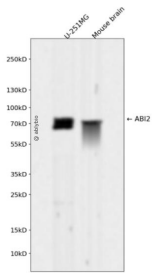
抗原信息

抗原信息	Recombinant fusion protein corresponding to Human ABI2.
序列	HKEKVARREIGILTNTNKNSRTHKIIAPANLERPVRYIRKPIDYTILDDIGHGVKWLRLFKVSTQNMKMGGLPRTTPPTQKPPS PPMSGKGTGLGRHSPYRT

靶点信息

研究背景	Regulator of actin cytoskeleton dynamics underlying cell motility and adhesion. Functions as a component of the WAVE complex, which activates actin nucleating machinery Arp2/3 to drive lamellipodia formation. Acts as regulator and substrate of nonreceptor tyrosine kinases ABL1 and ABL2 involved in processes linked to cell growth and differentiation. Positively regulates ABL1-mediated phosphorylation of ENAH, which is required for proper polymerization of nucleated actin filaments at the leading edge. Contributes to the regulation of actin assembly at the tips of neuron projections. In particular, controls dendritic spine morphogenesis and may promote dendritic spine specification toward large mushroom-type spines known as repositories of memory in the brain (By similarity. In hippocampal neurons, may mediate actin-dependent BDNF-NTRK2 early endocytic trafficking that triggers dendrite outgrowth (By similarity. Participates in ocular lens morphogenesis, likely by regulating lamellipodia-driven adherens junction formation at the epithelial cell-secondary lens fiber interface (By similarity. Also required for nascent adherens junction assembly in epithelial cells.
基因ID	10152
基因名	ABI2
Swiss	Q9NYB9
别名	ABI2;ABI-2;ABI2B;AIP-1;AbIBP3;SSH3BP2;argBP1;argBP1A;argBPIB

产品验证



Western blot analysis of ABI2 expressed in U-251MG, Mouse brain using ABI2 Rabbit mAb at 1:1000. Secondary antibody: HRP Goat Anti-Rabbit IgG (H+L) at 1:5000. Lysates/proteins: 30ug per lane. Blocking buffer: 5% non-fat dry milk in TBST. Detection: ECL Enhanced Kit. Exposure time: 120s.

实验步骤

访问官网浏览详情: www.ablybio.cn