

TFE3 Rabbit mAb

货号: **AYM30949**

产品信息

反应	Human
宿主	Rabbit
克隆性	Monoclonal
预测反应	
应用	IHC IF/ICC FC
推荐浓度	IHC: 1:50 - 1:200 IF/ICC: 1:50 - 1:200 FC: 1:20 - 1:50
理论分子量	
实测分子量	70kDa
形式	Liquid
保存条件	Store at -20°C. Avoid freeze / thaw cycles. Buffer: PBS with 0.75% BSA,50% glycerol,pH7.3.
偶联物	Unconjugated
阳性对照	NIH/3T3,C6,HeLa
细胞定位	Nucleus
纯化	Affinity purification

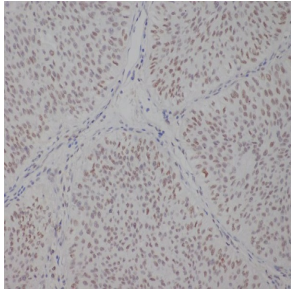
抗原信息

抗原信息	Recombinant fusion protein corresponding to Human TFE3.
序列	LQQARRQVKQYLSTTLGPKLASQALTPPPGPASAQPLPAPEAAHTTGPTGSAPNSPMALLTIGSSSEKEIDDVIDEISLES SYNDEMLSYLPGGTTGLQLPSTLPVSGNLLDVYSSQGVATPAITVNSCPAELPNIKREISETAKALLKERQKKNHNLIER RRRFNINDRIKELGTLIPKSSDPEMRWNKGTLKASVDYIRKLQKEQQRSKDLESRQRSLEQANRSLQLRIQELELQAQIHGL P

靶点信息

研究背景	This gene encodes a basic helix-loop-helix domain-containing transcription factor that binds MUE3-type E-box sequences in the promoter of genes. The encoded protein promotes the expression of genes downstream of transforming growth factor beta (TGF-beta) signaling. This gene may be involved in chromosomal translocations in renal cell carcinomas and other cancers, resulting in the production of fusion proteins. Translocation partners include PRCC (papillary renal cell carcinoma), NONO (non-POU domain containing, octamer-binding), and ASPSCR1 (alveolar soft part sarcoma chromosome region, candidate 1), among other genes. Alternative splicing results in multiple transcript variants. [provided by RefSeq, Aug 2013]
基因ID	7030
基因名	TFE3
Swiss	P19532
别名	RCCP2; RCCX1; TFEA; bHLHe33

产品验证



Immunohistochemical analysis of paraffin-embedded human bladder, using TFE3 Antibody.

实验步骤

访问官网浏览详情: www.ablybio.cn