

NALP3 Rabbit mAb

货号: **AYM30944**

产品信息

反应	Human
宿主	Rabbit
克隆性	Monoclonal
预测反应	
应用	WB IHC IF/ICC
推荐浓度	WB: 1:500 - 1:2000 IHC: 1:50 - 1:200 IF/ICC: 1:50 - 1:200
理论分子量	83kDa/105kDa/111kDa/112kDa/115kDa/118kDa
实测分子量	118kDa
形式	Liquid
保存条件	Store at -20°C. Avoid freeze / thaw cycles. Buffer: PBS with 0.75% BSA,50% glycerol,pH7.3.
偶联物	Unconjugated
阳性对照	
细胞定位	Cytoplasm,Endoplasmic reticulum,Inflammasome,Nucleus,Secreted,cytosol
纯化	Affinity purification

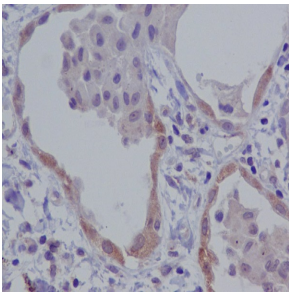
抗原信息

抗原信息	Recombinant fusion protein corresponding to Human NALP3.
序列	QDRFDYLFYIHCREVSLVTQRSLGDLIMSCCPDPNPPHKKIVRKPSRILFLMDGFDELQGAFDEHIGPLCTDWQKAERGDIL LSSLIRKLLPEASLLITT

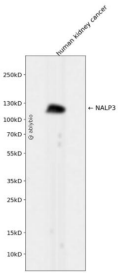
靶点信息

研究背景	This gene encodes a pyrin-like protein containing a pyrin domain, a nucleotide-binding site (NBS) domain, and a leucine-rich repeat (LRR) motif. This protein interacts with the apoptosis-associated speck-like protein PYCARD/ASC, which contains a caspase recruitment domain, and is a member of the NALP3 inflammasome complex. This complex functions as an upstream activator of NF-kappaB signaling, and it plays a role in the regulation of inflammation, the immune response, and apoptosis. Mutations in this gene are associated with familial cold autoinflammatory syndrome (FCAS), Muckle-Wells syndrome (MWS), chronic infantile neurological cutaneous and articular (CINCA) syndrome, and neonatal-onset multisystem inflammatory disease (NOMID). Multiple alternatively spliced transcript variants encoding distinct isoforms have been identified for this gene. Alternative 5' UTR structures are suggested by available data; however, insufficient evidence is available to determine if all of the represented 5' UTR splice patterns are biologically valid.
基因ID	114548
基因名	NLRP3
Swiss	Q96P20
别名	NLRP3;AGTAVPRL;All;AVP;C1orf7;CIAS1;CLR1.1;FCAS;FCAS1;FCU;MWS;NALP3;PYPAF1

产品验证



Immunohistochemical analysis of paraffin-embedded human lung carcinoma, using NALP3 Anti body.



Western blot analysis of NALP3 expressed in human kidney cancer using NALP3 Rabbit mAb at 1:1000. Secondary antibody: HRP Goat Anti-Rabbit IgG (H+L) at 1:5000. Lysates/proteins: 30ug per lane. Blocking buffer: 5% non-fat dry milk in TBST. Detection: ECL Enhanced Kit. Exposure time: 120s.

实验步骤

访问官网浏览详情: www.ablybio.cn