

# Phospho-POLR2A (S2) Rabbit mAb

货号: AYM30935

## 产品信息

反应	Human,Mouse,Rat
宿主	Rabbit
克隆性	Monoclonal
预测反应	
应用	WB IHC IF/ICC IP FC
推荐浓度	<b>WB:</b> 1:500 - 1:2000 <b>IHC:</b> 1:50 - 1:200 <b>IF/ICC:</b> 1:50 - 1:200 <b>IP:</b> 1:20 - 1:50 <b>FC:</b> 1:20 - 1:50
理论分子量	63kDa/217kDa
实测分子量	270kDa
形式	Liquid
保存条件	Store at -20°C. Avoid freeze / thaw cycles. Buffer: PBS with 0.75% BSA,50% glycerol,pH7.3.
偶联物	Unconjugated
阳性对照	U-251MG,Mouse liver,Mouse brain
细胞定位	Nucleus
纯化	Affinity purification

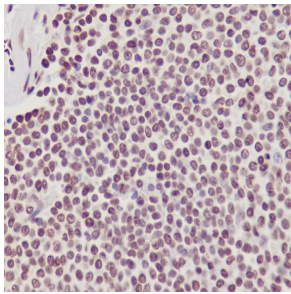
## 抗原信息

抗原信息	Recombinant fusion protein corresponding to Human Phospho-POLR2A (S2).
序列	KRDVFLERGEVMNLLMFLSTWDGKVPQPAILKPRPLWTGKQIFSLIIPGHINCIRTHSTHPDDEDSGPYKHISPGDTKVVVE NGELIMGILCKSLGTSAG

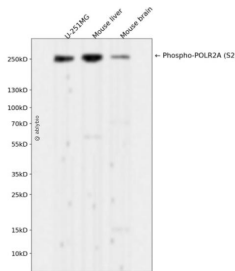
## 靶点信息

研究背景	This gene encodes the largest subunit of RNA polymerase II, the polymerase responsible for synthesizing messenger RNA in eukaryotes. The product of this gene contains a carboxy terminal domain composed of heptapeptide repeats that are essential for polymerase activity. These repeats contain serine and threonine residues that are phosphorylated in actively transcribing RNA polymerase. In addition, this subunit, in combination with several other polymerase subunits, forms the DNA binding domain of the polymerase, a groove in which the DNA template is transcribed into RNA.
基因ID	5430
基因名	POLR2A
Swiss	P24928
别名	POLR2A;POLR2;POLRA;RPB1;RPBh1;RPO2;RPOL2;RpIILS;hRPB220;hsRPB1;Pol II

## 产品验证



Immunohistochemical analysis of paraffin-embedded human spleen, using Phospho-POLR2A (S2) Antibody.



Western blot analysis of Phospho-POLR2A (S2) expressed in U-251MG, Mouse liver, Mouse brain using Phospho-POLR2A (S2) Rabbit mAb at 1:1000. Secondary antibody: HRP Goat Anti-Rabbit IgG (H+L) at 1:5000. Lysates/proteins: 30ug per lane. Blocking buffer: 5% non-fat dry milk in TBST. Detection: ECL Enhanced Kit. Exposure time: 120s.

## 实验步骤

访问官网浏览详情: [www.ablybio.cn](http://www.ablybio.cn)