

HLA B7 Rabbit mAb

货号: **AYM30934**

产品信息

| | |
|-------|---|
| 反应 | Human |
| 宿主 | Rabbit |
| 克隆性 | Monoclonal |
| 预测反应 | |
| 应用 | WB IHC |
| 推荐浓度 | WB: 1:500 - 1:2000 IHC: 1:50 - 1:200 |
| 理论分子量 | 40kDa |
| 实测分子量 | 40kDa |
| 形式 | Liquid |
| 保存条件 | Store at -20°C. Avoid freeze / thaw cycles. Buffer: PBS with 0.75% BSA,50% glycerol,pH7.3. |
| 偶联物 | Unconjugated |
| 阳性对照 | U-251MG,Jurkat,HepG2,A-549,MCF7 |
| 细胞定位 | Membrane,Single-pass type I membrane protein |
| 纯化 | Affinity purification |

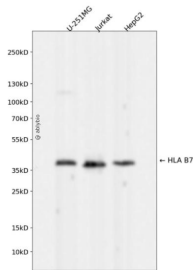
抗原信息

| | |
|------|---|
| 抗原信息 | Recombinant fusion protein corresponding to Human HLA B7. |
| 序列 | MLVMAPRTVLLLLSAALALTETWAGSHSMRYFYTSVSRPGRGEPFRFISVGYVDDTQFVRFDSDAASPREPRAPWIEQEG PEYWRNTQIYKAQAQTDRE |

靶点信息

| | |
|-------|--|
| 研究背景 | HLA-B belongs to the HLA class I heavy chain paralogues. This class I molecule is a heterodimer consisting of a heavy chain and a light chain (beta-2 microglobulin). The heavy chain is anchored in the membrane. Class I molecules play a central role in the immune system by presenting peptides derived from the endoplasmic reticulum lumen. They are expressed in nearly all cells. The heavy chain is approximately 45 kDa and its gene contains 8 exons. Exon 1 encodes the leader peptide, exon 2 and 3 encode the alpha1 and alpha2 domains, which both bind the peptide, exon 4 encodes the alpha3 domain, exon 5 encodes the transmembrane region and exons 6 and 7 encode the cytoplasmic tail. Polymorphisms within exon 2 and exon 3 are responsible for the peptide binding specificity of each class one molecule. Typing for these polymorphisms is routinely done for bone marrow and kidney transplantation. Hundreds of HLA-B alleles have been described. |
| 基因ID | 3106 |
| 基因名 | HLA-B |
| Swiss | P01889 |
| 别名 | HLA-B;AS;B-4901;HLAB;Bw-47;Bw-50;SPDA1 |

产品验证



Western blot analysis of HLA B7 expressed in U-251MG, Jurkat, HepG2 using HLA B7 Rabbit mAb at 1:1000. Secondary antibody: HRP Goat Anti-Rabbit IgG (H+L) at 1:5000. Lysates/proteins: 30ug per lane. Blocking buffer: 5% non-fat dry milk in TBST. Detection: ECL Enhanced Kit. Exposure time: 120s.

实验步骤

访问官网浏览详情: www.ablybio.cn