

GSC Rabbit mAb

货号: **AYM30928**

产品信息

反应	Human
宿主	Rabbit
克隆性	Monoclonal
预测反应	
应用	WB IP
推荐浓度	WB: 1:500 - 1:2000 IP: 1:20 - 1:50
理论分子量	28kDa
实测分子量	28kDa
形式	Liquid
保存条件	Store at -20°C. Avoid freeze / thaw cycles. Buffer: PBS with 0.75% BSA,50% glycerol,pH7.3.
偶联物	Unconjugated
阳性对照	HT-29,HepG2,MCF7,Mouse brain
细胞定位	nucleus
纯化	Affinity purification

抗原信息

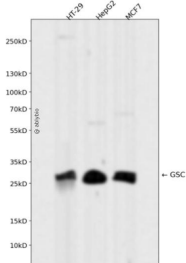
抗原信息	Recombinant fusion protein corresponding to Human GSC.
序列	MPASMFSIDNILAARPRCKDSVLPVAHSAAAPVVPALHGDSL YGASGGASSDYGAFYPRPVAPGGAGLPAAVSGSRLGY NNYFYGQLHVQAAPVGPACC

靶点信息

研究背景	This gene encodes a member of the bicoid subfamily of the paired (PRD) homeobox family of proteins. The encoded protein acts as a transcription factor and may be autoregulatory. A similar protein in mice play a role in craniofacial and rib cage development during embryogenesis. [provided by RefSeq, Jul 2008]
基因ID	145258

基因名	GSC
Swiss	P56915
别名	SAMS

产品验证



Western blot analysis of GSC expressed in HT-29, HepG2, MCF7 using GSC Rabbit mAb at 1:1000. Secondary antibody: HRP Goat Anti-Rabbit IgG (H+L) at 1:5000. Lysates/proteins: 30ug per lane. Blocking buffer: 5% non-fat dry milk in TBST. Detection: ECL Enhanced Kit. Exposure time: 120s.

实验步骤

访问官网浏览详情: www.ablybio.cn