

EGFR (ErbB 1) Rabbit mAb

货号: **AYM30918**

产品信息

反应	Human,Mouse,Rat
宿主	Rabbit
克隆性	Monoclonal
预测反应	
应用	WB IHC IF/ICC IP FC
推荐浓度	WB: 1:500 - 1:2000 IHC: 1:50 - 1:200 IF/ICC: 1:50 - 1:200 IP: 1:20 - 1:50 FC: 1:20 - 1:50
理论分子量	44kDa/69kDa/77kDa/134kDa
实测分子量	175kDa
形式	Liquid
保存条件	Store at -20°C. Avoid freeze / thaw cycles. Buffer: PBS with 0.75% BSA,50% glycerol,pH7.3.
偶联物	Unconjugated
阳性对照	Mouse brain,Rat brain
细胞定位	Cell membrane,Endoplasmic reticulum membrane,Endosome,Endosome membrane,Golgi apparatus membrane,Nucleus membrane,Nucleus,Secreted,Single-pass type I membrane protein
纯化	Affinity purification

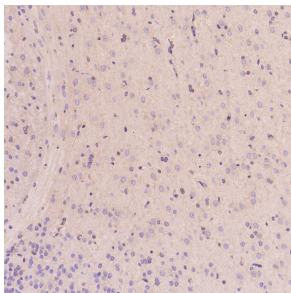
抗原信息

抗原信息	Recombinant fusion protein corresponding to Human EGFR (ErbB 1) Rabbit mAb.
序列	QGFFSSPSTSRTPLLSSLSATSNNSTVACIDRNLQSCPIKEDSFLQRYSSDPTGALTEDSIDDTFLPVPEYINQSVPKRPAGSVQNPVYHNQPLNPAPSRDPHYQDPHSTAVGNPEYLNTVQPTCVNSTFDSPAHWAKGSHQISLDNPDYQQDFFPKEAKPNGIFKGSTAENAEYLRVAPQSSEFIGA

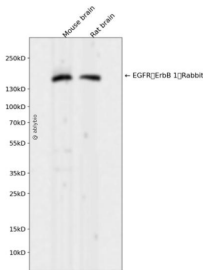
靶点信息

研究背景	The protein encoded by this gene is a transmembrane glycoprotein that is a member of the protein kinase superfamily. This protein is a receptor for members of the epidermal growth factor family. EGFR is a cell surface protein that binds to epidermal growth factor. Binding of the protein to a ligand induces receptor dimerization and tyrosine autophosphorylation and leads to cell proliferation. Mutations in this gene are associated with lung cancer.
基因ID	1956
基因名	EGFR
Swiss	P00533
别名	EGFR;ERBB;ERBB1;HER1;NISBD2;PIG61;mENA

产品验证



Immunohistochemical analysis of paraffin-embedded Rat cerebral cortex, using the Antibody at 1:100 dilution.



Western blot analysis of EGFR (ErbB 1) Rabbit expressed in Mouse brain, Rat brain using EGFR (ErbB 1) Rabbit mAb at 1:1000. Secondary antibody: HRP Goat Anti-Rabbit IgG (H+L) at 1:5000. Lysates/proteins: 30ug per lane. Blocking buffer: 5% non-fat dry milk in TBST. Detection: ECL Enhanced Kit. Exposure time: 120s.

实验步骤

访问官网浏览详情: www.ablybio.cn