

# ALDH1L1 Rabbit mAb

货号: **AYM30915**

## 产品信息

反应	Human,Mouse,Rat
宿主	Rabbit
克隆性	Monoclonal
预测反应	
应用	WB
推荐浓度	<b>WB:</b> 1:500 - 1:2000
理论分子量	55kDa/87kDa/98kDa/99kDa
实测分子量	99kDa
形式	Liquid
保存条件	Store at -20°C. Avoid freeze / thaw cycles. Buffer: PBS with 0.75% BSA,50% glycerol,pH7.3.
偶联物	Unconjugated
阳性对照	MCF7,Mouse brain,Mouse kidney,Rat brain
细胞定位	Cytoplasm
纯化	Affinity purification

## 抗原信息

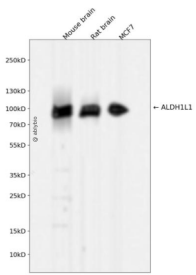
抗原信息	Recombinant fusion protein corresponding to Human ALDH1L1.
序列	MKIAVIGQSLFGQEVYCHLRKEGHEVGVFTVPDKDGKADPLGLEAEKDGVPVFKYSRWRAKQALPDVVAKYQALGAE LNVLPFCSQFIPMEIISAPRHGSIYHPSLLPRHRGASAINWTLIHGDKKGGFSIFWADDGLDTGDLQKECEVLPDDTVST LYNRFLFPEGIKGMVQAVRLIAEGKAPRLQPPEGATYEGIQKKETAKINWDQPAEAIHNWIRGNDKVPGAWTEACEQKLT FFNSTLN

## 靶点信息

研究背景	The protein encoded by this gene catalyzes the conversion of 10-formyltetrahydrofolate, nicotinamide adenine dinucleotide phosphate (NADP+), and water to tetrahydrofolate, NADPH, and carbon dioxide. The encoded protein belongs to the aldehyde dehydrogenase family. Loss of function or expression of this gene is associated with decreased apoptosis, increased cell motility, and cancer progression. There is an antisense transcript that overlaps on the opposite strand with this gene locus. Alternative splicing results in multiple transcript variants.
------	---

基因ID	10840
基因名	ALDH1L1
Swiss	O75891
别名	ALDH1L1;10-FTHFDH;10-fTHF;FDH;FTHFD

## 产品验证



Western blot analysis of ALDH1L1 expressed in Mouse brain,Rat brain,MCF7 using ALDH1L1 Rabbit mAb at 1:1000. Secondary antibody: HRP Goat Anti-Rabbit IgG (H+L) at 1:5000. Lysates/proteins: 30ug per lane. Blocking buffer: 5% non-fat dry milk in TBST. Detection: ECL Enhanced Kit. Exposure time: 120 S.

## 实验步骤

访问官网浏览详情: [www.ablybio.cn](http://www.ablybio.cn)