

# MEK3 Rabbit mAb

货号: **AYM30912**

## 产品信息

|       |  |
|-------|--|
| 反应    | Human,Mouse,Rat  |
| 宿主    | Rabbit   |
| 克隆性   | Monoclonal   |
| 预测反应  |  |
| 应用    | WB IHC IF/ICC IP FC  |
| 推荐浓度  | <b>WB:</b> 1:500 - 1:2000<br><b>IHC:</b> 1:50 - 1:200<br><b>IF/ICC:</b> 1:50 - 1:200<br><b>IP:</b> 1:20 - 1:50<br><b>FC:</b> 1:20 - 1:50 |
| 理论分子量 | 39kDa  |
| 实测分子量 | 39kDa  |
| 形式    | Liquid   |
| 保存条件  | Store at -20°C. Avoid freeze / thaw cycles.<br>Buffer: PBS with 0.75% BSA,50% glycerol,pH7.3.  |
| 偶联物   | Unconjugated   |
| 阳性对照  | HeLa,NIH/3T3,THP-1,C6,U-87MG,Mouse spleen  |
| 细胞定位  | cytosol,nucleoplasm  |
| 纯化    | Affinity purification  |

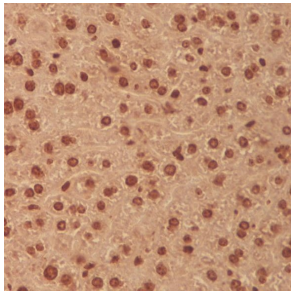
## 抗原信息

|      |  |
|------|--|
| 抗原信息 | Recombinant fusion protein corresponding to Human MEK3.  |
| 序列   | FYRKVLDKNMTIPEDILGEIAVSIVRALEHLHLSKLSVIHRDVKPSNVLINKEGHVKMCDFGISGYLVDSVAKTMDAGCKPYM<br>APERINPELNQKGYNVKSDVWSLGITMIEMAILRFPYESWGTQPFQQLKQVVEEPSQLPADRFSPFVDFTAQCLRKNPAE<br>RMSYLELMEHPFFTLHKTKKTDIAAFVKEILGEDS |

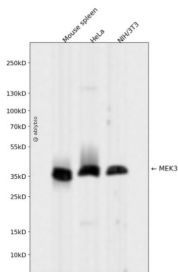
## 靶点信息

|       |  |
|-------|--|
| 研究背景  | The protein encoded by this gene is a dual specificity protein kinase that belongs to the MAP kinase kinase family. This kinase is activated by mitogenic and environmental stress, and participates in the MAP kinase-mediated signaling cascade. It phosphorylates and thus activates MAPK14/p38-MAPK. This kinase can be activated by insulin, and is necessary for the expression of glucose transporter. Expression of RAS oncogene is found to result in the accumulation of the active form of this kinase, which thus leads to the constitutive activation of MAPK14, and confers oncogenic transformation of primary cells. The inhibition of this kinase is involved in the pathogenesis of Yersinia pseudotuberculosis. Multiple alternatively spliced transcript variants that encode distinct isoforms have been reported for this gene. [provided by RefSeq, Jul 2008] |
| 基因ID  | 5606   |
| 基因名   | MAP2K3   |
| Swiss | P46734   |
| 别名    | MAPKK3; MEK3; MKK3; PRKMK3; SAPKK-2; SAPKK2  |

## 产品验证



Immunohistochemical analysis of paraffin-embedded human liver, using MEK3 Antibody.



Western blot analysis of MEK3 expressed in Mouse spleen, HeLa, NIH/3T3 using MEK3 Rabbit mAb at 1:1000. Secondary antibody: HRP Goat Anti-Rabbit IgG (H+L) at 1:5000. Lysates/proteins: 30ug per lane. Blocking buffer: 5% non-fat dry milk in TBST. Detection: ECL Enhanced Kit. Exposure time: 120s.

## 实验步骤

访问官网浏览详情: [www.ablybio.cn](http://www.ablybio.cn)