

PPP6C Rabbit mAb

货号: **AYM30904**

产品信息

反应	Human
宿主	Rabbit
克隆性	Monoclonal
预测反应	
应用	WB IF/ICC FC
推荐浓度	WB: 1:500 - 1:2000 IF/ICC: 1:50 - 1:200 FC: 1:20 - 1:50
理论分子量	32kDa
实测分子量	32kDa
形式	Liquid
保存条件	Store at -20°C. Avoid freeze / thaw cycles. Buffer: PBS with 0.75% BSA,50% glycerol,pH7.3.
偶联物	Unconjugated
阳性对照	293T,A-549,RD,Mouse brain,Mouse spleen,Rat lung,Rat brain
细胞定位	Cytoplasm
纯化	Affinity purification

抗原信息

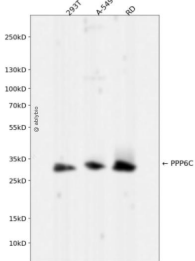
抗原信息	Recombinant fusion protein corresponding to Human PPP6C.
序列	AISPRGAGWLFgakVTNEFVHINNLKlicRAHQLVHEgyKFMFDEKLVTVWSAPNYCYRCGNIASIMVFKDVNTREPKLFR AVPDSERVIPRRTTTPYFL

靶点信息

研究背景	This gene encodes the catalytic subunit of protein phosphatase, a component of a signaling pathway regulating cell cycle progression. Splice variants encoding different protein isoforms exist. The pseudogene of this gene is located on chromosome X.
基因ID	5537

基因名	PPP6C
Swiss	O00743
别名	PPP6C; PP6; PP6C; protein phosphatase 6 catalytic subunit

产品验证



Western blot analysis of PPP6C expressed in 293T,A-549,RD using PPP6C Rabbit mAb at 1:1000. Secondary antibody: HRP Goat Anti-Rabbit IgG (H+L) at 1:5000. Lysates/proteins: 30ug per lane. Blocking buffer: 5% non-fat dry milk in TBST. Detection: ECL Enhanced Kit. Exposure time: 120s.

实验步骤

访问官网浏览详情: www.ablybio.cn