

Calponin Rabbit mAb

货号: **AYM30889**

产品信息

反应	Human,Mouse,Rat,Dog,Pig
宿主	Rabbit
克隆性	Monoclonal
预测反应	
应用	WB IHC IF/ICC
推荐浓度	WB: 1:500 - 1:2000 IHC: 1:50 - 1:200 IF/ICC: 1:50 - 1:200
理论分子量	34kDa
实测分子量	34kDa
形式	Liquid
保存条件	Store at -20°C. Avoid freeze / thaw cycles. Buffer: PBS with 0.75% BSA,50% glycerol,pH7.3.
偶联物	Unconjugated
阳性对照	Mouse lung,Mouse kidney,Mouse heart,Rat lung,Rat uterus
细胞定位	cytoskeleton,focal adhesion
纯化	Affinity purification

抗原信息

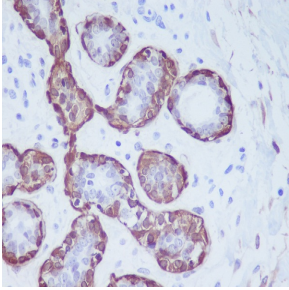
抗原信息	Recombinant fusion protein corresponding to Human Calponin .
序列	PLDQATISLQMGTNKGASQAGMTAPGTRQIFEPGLGMEHCDTLNLSLQMGSNKGASQRGMTVYGLPRQVYDPKYCLT PEYPELGEPAHNHHAHNYNSA

靶点信息

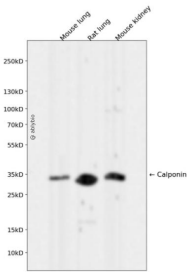
研究背景	Thin filament-associated protein that is implicated in the regulation and modulation of smooth muscle contraction. It is capable of binding to actin, calmodulin and tropomyosin. The interaction of calponin with actin inhibits the actomyosin Mg-ATPase activity (By similarity).
基因ID	1264

基因名	CNN1
Swiss	P51911
别名	HEL-S-14; SMCC; Sm-Calp

产品验证



Immunohistochemical analysis of paraffin-embedded human breast, using Calponin Antibody.



Western blot analysis of Calponin expressed in Mouse lung, Rat lung, Mouse kidney using Calponin Rabbit mAb at 1:1000. Secondary antibody: HRP Goat Anti-Rabbit IgG (H+L) at 1:5000. Lysates/proteins: 30ug per lane. Blocking buffer: 5% non-fat dry milk in TBST. Detection: ECL Enhanced Kit. Exposure time: 120s.

实验步骤

访问官网浏览详情: www.ablybio.cn