

Phospho-Nrf2 (S40) Rabbit mAb

货号: **AYM30884**

产品信息

反应	Human
宿主	Rabbit
克隆性	Monoclonal
预测反应	
应用	WB IHC IF/ICC IP FC
推荐浓度	WB: 1:500 - 1:2000 IHC: 1:50 - 1:200 IF/ICC: 1:50 - 1:200 IP: 1:20 - 1:50 FC: 1:20 - 1:50
理论分子量	65kDa/66kDa/67kDa
实测分子量	90kDa
形式	Liquid
保存条件	Store at -20°C. Avoid freeze / thaw cycles. Buffer: PBS with 0.75% BSA,50% glycerol,pH7.3.
偶联物	Unconjugated
阳性对照	HeLa,C6
细胞定位	Cytoplasm,Nucleus,cytosol
纯化	Affinity purification

抗原信息

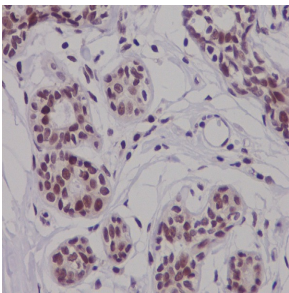
抗原信息	Recombinant fusion protein corresponding to Human Phospho-Nrf2 (S40).
序列	SPHFLNAFEDSFSSILSTEDPNQLTVNSLNSDATVNTDFGDEFYSAFIAEPSISNSMPSPATLSHLSSELLNGPIDVSDLSLC KAFNQNHPESTAEFNDSGSLNTSPSVASPEHSVSSSYGDTLLGLSDSEVEELDSAPGSVKQNGPKTPVHSS

靶点信息

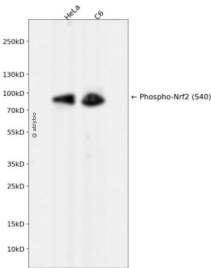
研究背景	This gene encodes a transcription factor which is a member of a small family of basic leucine zipper (bZIP) proteins. The encoded transcription factor regulates genes which contain antioxidant response elements (ARE) in their promoters; many of these genes encode proteins involved in response to injury and inflammation which includes the production of free radicals. Multiple transcript variants encoding different isoforms have been characterized for this gene.
------	--

基因ID	4780
基因名	NFE2L2
Swiss	Q16236
别名	NFE2L2;HEBP1;NRF2

产品验证



Immunohistochemical analysis of paraffin-embedded human breast carcinoma, using Phospho-Nrf2 (S40) Antibody.



Western blot analysis of Phospho-Nrf2 (S40) expressed in HeLa, C6 using Phospho-Nrf2 (S40) Rabbit mAb at 1:1000. Secondary antibody: HRP Goat Anti-Rabbit IgG (H+L) at 1:5000. Lysates/proteins: 30ug per lane. Blocking buffer: 5% non-fat dry milk in TBST. Detection: ECL Enhanced Kit. Exposure time: 120s.

实验步骤

访问官网浏览详情: www.ablybio.cn