

ATP5A1 Rabbit mAb

货号: **AYM30882**

产品信息

反应	Human,Mouse,Rat
宿主	Rabbit
克隆性	Monoclonal
预测反应	
应用	WB IHC IF/ICC FC
推荐浓度	WB: 1:500 - 1:2000 IHC: 1:50 - 1:200 IF/ICC: 1:50 - 1:200 FC: 1:20 - 1:50
理论分子量	54kDa/57kDa/59kDa
实测分子量	55kDa
形式	Liquid
保存条件	Store at -20°C. Avoid freeze / thaw cycles. Buffer: PBS with 0.75% BSA,50% glycerol,pH7.3.
偶联物	Unconjugated
阳性对照	BT474,SKOV3,HeLa,MCF-7,Mouse kidney,Mouse heart,Rat kidney,Rat heart
细胞定位	Cell membrane,Extracellular side,Mitochondrion inner membrane,Peripheral membrane protein
纯化	Affinity purification

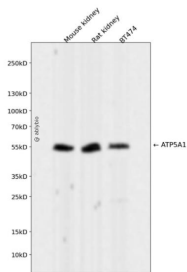
抗原信息

抗原信息	Recombinant fusion protein corresponding to Human ATP5A1.
序列	MLSVRVAAAVRALPRRAGLVSRNALGSSFIAARNFHASNTHLQKTGTAEMSSILEERILGADTSVDLEETGRVLSIGDGIA RVHGLRNVQAEEMVEFSSGLKGMSLNLEPDNVGVVVFVFGNDKLIKEGDIVKRTGAIVDVVPVGEELLGRVVDALGNAIDGKG PIGSKTRRRVGLKAPGIIIPRISVREPMQTGIKAVDSLVIPIGRGQRELIIGDRQTGKTSIAIDTIINQKRFNDGSDEKKKLYCIYV AIGQKRSTVAQLVKRLTDADAMKYTIVVSATAS

靶点信息

研究背景	This gene encodes a subunit of mitochondrial ATP synthase. Mitochondrial ATP synthase catalyzes ATP synthesis, using an electrochemical gradient of protons across the inner membrane during oxidative phosphorylation. ATP synthase is composed of two linked multi-subunit complexes: the soluble catalytic core, F ₁ , and the membrane-spanning component, F _o , comprising the proton channel. The catalytic portion of mitochondrial ATP synthase consists of 5 different subunits (alpha, beta, gamma, delta, and epsilon) assembled with a stoichiometry of 3 alpha, 3 beta, and a single representative of the other 3. The proton channel consists of three main subunits (a, b, c). This gene encodes the alpha subunit of the catalytic core. Alternatively spliced transcript variants encoding the different isoforms have been identified. Pseudogenes of this gene are located on chromosomes 9, 2, and 16.
基因ID	498
基因名	ATP5A1
Swiss	P25705
别名	ATP5A1;ATP5A;ATP5AL2;ATPM;COXPD22;HEL-S-123m;MC5DN4;MOM2;OMR;ORM;hATP1

产品验证



Western blot analysis of ATP5A1 expressed in Mouse kidney, Rat kidney, BT474 using ATP5A1 Rabbit mAb at 1:1000. Secondary antibody: HRP Goat Anti-Rabbit IgG (H+L) at 1:5000. Lysates/proteins: 30ug per lane. Blocking buffer: 5% non-fat dry milk in TBST. Detection: ECL Enhanced Kit. Exposure time: 120s.

实验步骤

访问官网浏览详情: www.ablybio.cn