

Human IgM Rabbit mAb

货号: **AYM30880**

产品信息

反应	Human
宿主	Rabbit
克隆性	Monoclonal
预测反应	
应用	WB IHC IP
推荐浓度	WB: 1:500 - 1:2000 IHC: 1:50 - 1:200 IP: 1:20 - 1:50
理论分子量	75kDa
实测分子量	75kDa
形式	Liquid
保存条件	Store at -20°C. Avoid freeze / thaw cycles. Buffer: PBS with 0.75% BSA,50% glycerol,pH7.3.
偶联物	Unconjugated
阳性对照	Human plasma
细胞定位	blood microparticle,cell surface,external side of plasma membrane,extracellular exosome,extracellular space,immunoglobulin complex, circulating,plasma membrane
纯化	Affinity purification

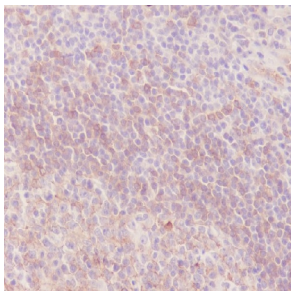
抗原信息

抗原信息	Recombinant fusion protein corresponding to Human Human IgM.
序列	GSASAPTLFPLVSCENSPTSSTSSVAVGCLAQDFLPDSITFSWKYKNNSDISSTRGFPSVLRGGKYAATSQVLLPSKDVMQ GTDEHVCKVQHPNGNKEKNVPLPVIAELPPKVSFVPPRDGFFGNPRKSKLICQATGFSPRQIQVSWLREGKQVSGVGT TDQVQAEAKESGPTTYKVTSTLTIKESDWLGQSMFTCRVDHRGLTFQQNASSMCVPDQDTAIRVFAIPPSFASIFLTKSTK LTCLVTDLTTYDSVTISWTRQNGEAVKTHTNISESHPNATFSAVGEASICEDDWNSEGERFTCTVTHDLPSPKQTISRPK GVALHRPDVYLLPPAREQLNLRASATITCLVTGFSPADVFVQWMQRGQPLSPEKYVTSAPMPEPQAPGRYFAHSILTVSEE EWNTGETYTCVVAHEALPNRVTERTVDKSTGKPTLYNVSLVMSDAGTCY

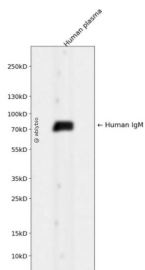
靶点信息

研究背景	Immunoglobulins (Ig) are the antigen recognition molecules of B cells. An Ig molecule is made up of 2 identical heavy chains and 2 identical light chains joined by disulfide bonds so that each heavy chain is linked to a light chain and the 2 heavy chains are linked together. Each Ig heavy chain has an N-terminal variable (V) region containing the antigen-binding site and a C-terminal constant (C) region, encoded by an individual C region gene, that determines the isotype of the antibody and provides effector or signaling functions. The heavy chain V region is encoded by 1 each of 3 types of genes: V genes, joining (J) genes, and diversity (D) genes. The C region genes are clustered downstream of the V region genes within the heavy chain locus on chromosome 14. The IGHM gene encodes the C region of the mu heavy chain, which defines the IgM isotype. Naive B cells express the transmembrane forms of IgM and IgD on their surface. During an antibody response, activated B cells can switch to the expression of individual downstream heavy chain C region genes by a process of somatic recombination known as isotype switching. In addition, secreted Ig forms that act as antibodies can be produced by alternative RNA processing of the heavy chain C region sequences. Although the membrane forms of all Ig isotypes are monomeric, secreted IgM forms pentamers, and occasionally hexamers, in plasma.
基因ID	3507
基因名	
Swiss	P01871
别名	AGM1; MU; VH

产品验证



Immunohistochemical analysis of paraffin-embedded Human tonsil, using Human IgM Antibody.



Western blot analysis of Human IgM expressed in Human plasma using Human IgM Rabbit mAb at 1:1000. Secondary antibody: HRP Goat Anti-Rabbit IgG (H+L) at 1:5000. Lysates/proteins: 30 ug per lane. Blocking buffer: 5% non-fat dry milk in TBST. Detection: ECL Enhanced Kit. Exposure time: 120s.

实验步骤

访问官网浏览详情: www.ablybio.cn