

# IGFBP1 Rabbit mAb

货号: **AYM30877**

## 产品信息

反应	Human,Mouse,Rat
宿主	Rabbit
克隆性	Monoclonal
预测反应	
应用	WB
推荐浓度	<b>WB:</b> 1:500 - 1:2000
理论分子量	27kDa
实测分子量	30kDa
形式	Liquid
保存条件	Store at -20°C. Avoid freeze / thaw cycles. Buffer: PBS with 0.75% BSA,50% glycerol,pH7.3.
偶联物	Unconjugated
阳性对照	HepG2
细胞定位	Secreted
纯化	Affinity purification

## 抗原信息

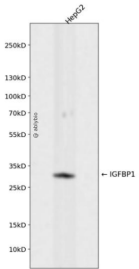
抗原信息	Recombinant fusion protein corresponding to Human IGFBP1.
序列	GLSCRALPGEQQPLHALTRGQGACVQESDASAPHAEEAGSPESPESTEITEEELLDNFHLMAPSEEDHSILWDAISTYDGS KALHVTNIKKWKEPCRIELYRVVESLAKAQETSGEEISKFYLPNCNKNGFYHSRQCETSMEDGEAGLCWCVYPWNGKRIPGS PEIRGDPNCQIYFNVQN

## 靶点信息

研究背景	This gene is a member of the insulin-like growth factor binding protein (IGFBP) family and encodes a protein with an IGFBP domain and a thyroglobulin type-I domain. The protein binds both insulin-like growth factors (IGFs) I and II and circulates in the plasma. Binding of this protein prolongs the half-life of the IGFs and alters their interaction with cell surface receptors.
基因ID	3484

基因名	IGFBP1
Swiss	P08833
别名	IGFBP1;AFBP;IBP1;IGF-BP25;PP12;hIGFBP-1

## 产品验证



Western blot analysis of IGFBP1 expressed in HepG2 using IGFBP1 Rabbit mAb at 1:1000. Secondary antibody: HRP Goat Anti-Rabbit IgG (H+L) at 1:5000. Lysates/proteins: 30ug per lane. Blocking buffer: 5% non-fat dry milk in TBST. Detection: ECL Enhanced Kit. Exposure time: 120s.

## 实验步骤

访问官网浏览详情: [www.ablybio.cn](http://www.ablybio.cn)