

# Inhibin beta A Rabbit mAb

货号: **AYM30872**

## 产品信息

反应	Human,Mouse,Rat
宿主	Rabbit
克隆性	Monoclonal
预测反应	
应用	WB
推荐浓度	<b>WB:</b> 1:500 - 1:2000
理论分子量	47kDa
实测分子量	43kDa
形式	Liquid
保存条件	Store at -20°C. Avoid freeze / thaw cycles. Buffer: PBS with 0.75% BSA,50% glycerol,pH7.3.
偶联物	Unconjugated
阳性对照	HeLa,Mouse uterus,Rat testis
细胞定位	Secreted
纯化	Affinity purification

## 抗原信息

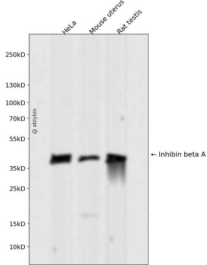
抗原信息	Recombinant fusion protein corresponding to Human Inhibin beta A.
序列	MPLLWLRGFLASCWIIVRSSPTPGSEGHSAAPDCPSCALAALPKDVPNSQPPEMVEAVKKHILNMLHLKKRPDVTQPVPKA ALLNAIRKLHVGKVGNGY

## 靶点信息

研究背景	This gene encodes a member of the TGF-beta (transforming growth factor-beta) superfamily of proteins. The encoded preproprotein is proteolytically processed to generate a subunit of the dimeric activin and inhibin protein complexes. These complexes activate and inhibit, respectively, follicle stimulating hormone secretion from the pituitary gland. The encoded protein also plays a role in eye, tooth and testis development. Elevated expression of this gene may be associated with cancer cachexia in human patients. [provided by RefSeq, Aug 2016]
基因ID	3624

基因名	INHBA
Swiss	P08476
别名	EDF; FRP

## 产品验证



Western blot analysis of Inhibin beta A expressed in HeLa, Mouse uterus, Rat testis using Inhibin beta A Rabbit mAb at 1:1000. Secondary antibody: HRP Goat Anti-Rabbit IgG (H+L) at 1:5000. Lysates/proteins: 30ug per lane. Blocking buffer: 5% non-fat dry milk in TBST. Detection: ECL Enhanced Kit. Exposure time: 120s.

## 实验步骤

访问官网浏览详情: [www.ablybio.cn](http://www.ablybio.cn)