

B Raf Rabbit mAb

货号: **AYM30871**

产品信息

| | |
|-------|---|
| 反应 | Human,Mouse,Rat |
| 宿主 | Rabbit |
| 克隆性 | Monoclonal |
| 预测反应 | |
| 应用 | WB IHC IP FC |
| 推荐浓度 | WB: 1:500 - 1:2000 IHC: 1:50 - 1:200 IP: 1:20 - 1:50 FC: 1:20 - 1:50 |
| 理论分子量 | 84kDa |
| 实测分子量 | 85kDa |
| 形式 | Liquid |
| 保存条件 | Store at -20°C. Avoid freeze / thaw cycles. Buffer: PBS with 0.75% BSA,50% glycerol,pH7.3. |
| 偶联物 | Unconjugated |
| 阳性对照 | Raji |
| 细胞定位 | Cell membrane,Cytoplasm,Nucleus |
| 纯化 | Affinity purification |

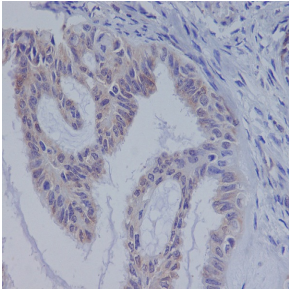
抗原信息

| | |
|------|--|
| 抗原信息 | Recombinant fusion protein corresponding to Human B Raf. |
| 序列 | RDSSD |

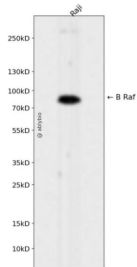
靶点信息

| | |
|-------|---|
| 研究背景 | This gene encodes a protein belonging to the raf/mil family of serine/threonine protein kinases. This protein plays a role in regulating the MAP kinase/ERKs signaling pathway, which affects cell division, differentiation, and secretion. Mutations in this gene are associated with cardiofaciocutaneous syndrome, a disease characterized by heart defects, mental retardation and a distinctive facial appearance. Mutations in this gene have also been associated with various cancers, including non-Hodgkin lymphoma, colorectal cancer, malignant melanoma, thyroid carcinoma, non-small cell lung carcinoma, and adenocarcinoma of lung. A pseudogene, which is located on chromosome X, has been identified for this gene. |
| 基因ID | 673 |
| 基因名 | BRAF |
| Swiss | P15056 |
| 别名 | BRAF;B-RAF1;B-raf;BRAF1;NS7;RAFB1 |

产品验证



Immunohistochemical analysis of paraffin-embedded human ovarian cancer, using B Raf Antibody.



Western blot analysis of B Raf expressed in Raji using B Raf Rabbit mAb at 1:1000. Secondary antibody: HRP Goat Anti-Rabbit IgG (H+L) at 1:5000. Lysates/proteins: 30ug per lane. Blocking buffer: 5% non-fat dry milk in TBST. Detection: ECL Enhanced Kit. Exposure time: 120s.

实验步骤

访问官网浏览详情: www.ablybio.cn