

# Integrin beta 3 Rabbit mAb

货号: **AYM30864**

## 产品信息

反应	Human,Mouse,Rat
宿主	Rabbit
克隆性	Monoclonal
预测反应	
应用	WB IHC IF/ICC
推荐浓度	<b>WB:</b> 1:500 - 1:2000 <b>IHC:</b> 1:50 - 1:200 <b>IF/ICC:</b> 1:50 - 1:200
理论分子量	110kDa
实测分子量	110kDa
形式	Liquid
保存条件	Store at -20°C. Avoid freeze / thaw cycles. Buffer: PBS with 0.75% BSA,50% glycerol,pH7.3.
偶联物	Unconjugated
阳性对照	U-87MG,HUVEC,Mouse lung
细胞定位	Cell junction,Cell membrane,Cell projection,Single-pass type I membrane protein,focal adhesion,lamellipodium membrane
纯化	Affinity purification

## 抗原信息

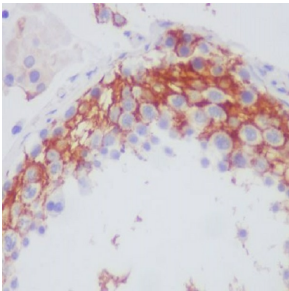
抗原信息	Recombinant fusion protein corresponding to Human Integrin beta 3 .
序列	CVVRFQYYEDSSGKSIYVVEEPECPKGPDILVLLSVMGAILLIGLAALLIWKLLITIHDRKEFAKFEEERARAKWDTANNPLYKEATSTFTNITYRGT

## 靶点信息

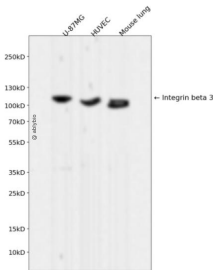
研究背景	The ITGB3 protein product is the integrin beta chain beta 3. Integrins are integral cell-surface proteins composed of an alpha chain and a beta chain. A given chain may combine with multiple partners resulting in different integrins. Integrin beta 3 is found along with the alpha IIb chain in platelets. Integrins are known to participate in cell adhesion as well as cell-surface mediated signalling. [provided by RefSeq, Jul 2008]
------	---

基因ID	3690
基因名	ITGB3
Swiss	P05106
别名	BDPLT16;BDPLT2;CD61;GP3A;GPIIIa;GT;Integrin beta 3;ITGB3

## 产品验证



Immunohistochemical analysis of paraffin-embedded human testis, using Integrin beta 3 Antibody .



Western blot analysis of Integrin beta 3 expressed in U-87MG, HUVEC, Mouse lung using Integrin beta 3 Rabbit mAb at 1:1000. Secondary antibody: HRP Goat Anti-Rabbit IgG (H+L) at 1:5000. Lysates/proteins: 30ug per lane. Blocking buffer: 5% non-fat dry milk in TBST. Detection: ECL Enhanced Kit. Exposure time: 120s.

## 实验步骤

访问官网浏览详情: [www.ablybio.cn](http://www.ablybio.cn)