

WSTF Rabbit mAb

货号: **AYM30854**

产品信息

反应	Human,Mouse,Rat
宿主	Rabbit
克隆性	Monoclonal
预测反应	
应用	WB FC
推荐浓度	WB: 1:500 - 1:2000 FC: 1:20 - 1:50
理论分子量	170kDa
实测分子量	185kDa
形式	Liquid
保存条件	Store at -20°C. Avoid freeze / thaw cycles. Buffer: PBS with 0.75% BSA,50% glycerol,pH7.3.
偶联物	Unconjugated
阳性对照	SW480,BT-474,SKOV3,HeLa,HepG2,Mouse thymus
细胞定位	Nucleus
纯化	Affinity purification

抗原信息

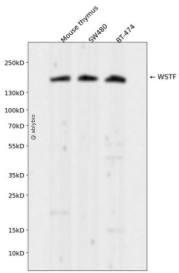
抗原信息	Recombinant fusion protein corresponding to Human WSTF.
序列	MAPLLGRKPFPLVKPLPGEEPLFTIPHTQEAFRTREEYEARELRYSERIWTCKSTGSSQLTHKEAWEEEQEVAELLKEEPPAW YEKLVLEMVHHNTASLEKLVDTAWLEIMTKYAVGEECDFEVGKEKMLKVIVKIHPLEKVDEEATEKKSDGACDSPSSDKE NSSQIAQDHQKKETVVKEDGRRESINDRARRSPRKLPTSLKKGKRWAPPKFLPHKYDVKLQNEDKIISNVPADSLIRTER PPNKEIVRYFIRHN

靶点信息

研究背景	This gene encodes a member of the bromodomain protein family. The bromodomain is a structural motif characteristic of proteins involved in chromatin-dependent regulation of transcription. This gene is deleted in Williams-Beuren syndrome, a developmental disorder caused by deletion of multiple genes at 7q11.23.
------	---

基因ID	9031
基因名	BAZ1B
Swiss	Q9UIG0
别名	BAZ1B;WBSCR10;WBSCR9;WSTF

产品验证



Western blot analysis of WSTF expressed in Mouse thymus, SW480, BT-474 using WSTF Rabbit mAb at 1:1000. Secondary antibody: HRP Goat Anti-Rabbit IgG (H+L) at 1:5000. Lysates/proteins: 30ug per lane. Blocking buffer: 5% non-fat dry milk in TBST. Detection: ECL Enhanced Kit. Exposure time: 120s.

实验步骤

访问官网浏览详情: www.ablybio.cn