

# PIWIL1 Rabbit mAb

货号: **AYM30846**

## 产品信息

反应	Human,Mouse,Rat
宿主	Rabbit
克隆性	Monoclonal
预测反应	
应用	WB
推荐浓度	<b>WB:</b> 1:500 - 1:2000
理论分子量	99kDa
实测分子量	99kDa
形式	Liquid
保存条件	Store at -20°C. Avoid freeze / thaw cycles. Buffer: PBS with 0.75% BSA,50% glycerol,pH7.3.
偶联物	Unconjugated
阳性对照	Mouse testis,Mouse brain,Rat testis,Rat brain
细胞定位	Cytoplasm
纯化	Affinity purification

## 抗原信息

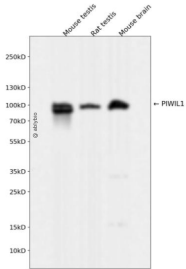
抗原信息	Recombinant fusion protein corresponding to Human PIWIL1.
序列	YRDGVGDGQLKTLVNYEVPQFLDCLKSIGRGYNPRLTVIVVKKRVNTRFFAQSGGRLQNPLPGTVIDVEVTRPEWYDFFIV SQAVRSGSVSPHYNVIYDN

## 靶点信息

研究背景	This gene encodes a member of the PIWI subfamily of Argonaute proteins, evolutionarily conserved proteins containing both PAZ and Piwi motifs that play important roles in stem cell self-renewal, RNA silencing, and translational regulation in diverse organisms. The encoded protein may play a role as an intrinsic regulator of the self-renewal capacity of germline and hematopoietic stem cells. Alternatively spliced transcript variants encoding different isoforms have been found for this gene. [provided by RefSeq, Jul 2010]
基因ID	9271

基因名	PIWIL1
Swiss	Q96J94
别名	CT80.1; HIWI; MIWI; PIWI

## 产品验证



Western blot analysis of PIWIL1 expressed in Mouse testis,Rat testis,Mouse brain using PIWIL1 Rabbit m Ab at 1:1000. Secondary antibody: HRP Goat Anti-Rabbit IgG (H+L) at 1:5000. Lysates/proteins: 30ug per lane. Blocking buffer: 5% non-fat dry milk in TBST. Detection: ECL Enhanced Kit. Exposure time: 120s

## 实验步骤

访问官网浏览详情: [www.ablybio.cn](http://www.ablybio.cn)