

KPNA2 Rabbit mAb

货号: **AYM30844**

产品信息

反应	Human,Mouse,Rat
宿主	Rabbit
克隆性	Monoclonal
预测反应	
应用	WB FC
推荐浓度	WB: 1:500 - 1:2000 FC: 1:20 - 1:50
理论分子量	57kDa
实测分子量	58kDa
形式	Liquid
保存条件	Store at -20°C. Avoid freeze / thaw cycles. Buffer: PBS with 0.75% BSA,50% glycerol,pH7.3.
偶联物	Unconjugated
阳性对照	MCF7,PC-3,U-251MG,Mouse testis
细胞定位	Cytoplasm,Nucleus
纯化	Affinity purification

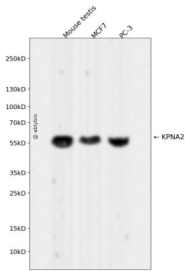
抗原信息

抗原信息	Recombinant fusion protein corresponding to Human KPNA2.
序列	MSTNENANTPAARLHRFKNKGGKDDSTEMRRRRIEVNVELRKAKKDDQMLKRRNVSSFPDDATSPHQENRNNQGTWNWSV DDIVKGINSSNVENQLQATQAARKLLSREKQPPIDNIIIRAGLIPKFVSLGRTDCSPIQFESAWALTNIASGTSEQTKAVVDG GAIPAFISLLASPHAHISEQAVWALGNIAGDGSVFRDLVIKYGAVDPLLALLAVPDMSSLACGYLRNLTWTLSNLCRNKNPA PPIDAVEQILPTLVRLHHDDPEVLADTCWAISSYLTGPNRIGMVV

靶点信息

研究背景	The import of proteins into the nucleus is a process that involves at least 2 steps. The first is an energy-in dependent docking of the protein to the nuclear envelope and the second is an energy-dependent translo cation through the nuclear pore complex. Imported proteins require a nuclear localization sequence (NLS) which generally consists of a short region of basic amino acids or 2 such regions spaced about 10 amino acids apart. Proteins involved in the first step of nuclear import have been identified in different systems. These include the Xenopus protein importin and its yeast homolog, SRP1 (a suppressor of certain temper ature-sensitive mutations of RNA polymerase I in Saccharomyces cerevisiae), which bind to the NLS. KPN A2 protein interacts with the NLSs of DNA helicase Q1 and SV40 T antigen and may be involved in the nu clear transport of proteins. KPNA2 also may play a role in V(D)J recombination. Alternative splicing results in multiple transcript variants.
基因ID	3838
基因名	KPNA2
Swiss	P52292
别名	KPNA2;IPOA1;QIP2;RCH1;SRP1-alpha;SRP1alpha

产品验证



Western blot analysis of KPNA2 expressed in Mouse testis, MCF7, PC-3 using KPNA2 Rabbit mAb at 1:100 0. Secondary antibody: HRP Goat Anti-Rabbit IgG (H+L) at 1:5000. Lysates/proteins: 30ug per lane. Blo cking buffer: 5% non-fat dry milk in TBST. Detection: ECL Enhanced Kit. Exposure time: 120s.

实验步骤

访问官网浏览详情: www.ablybio.cn