

p23 Rabbit mAb

货号: **AYM30834**

产品信息

反应	Human,Mouse,Rat
宿主	Rabbit
克隆性	Monoclonal
预测反应	
应用	WB IF/ICC IP
推荐浓度	WB: 1:500 - 1:2000 IF/ICC: 1:50 - 1:200 IP: 1:20 - 1:50
理论分子量	14kDa/16kDa/18kDa
实测分子量	23kDa
形式	Liquid
保存条件	Store at -20°C. Avoid freeze / thaw cycles. Buffer: PBS with 0.75% BSA,50% glycerol,pH7.3.
偶联物	Unconjugated
阳性对照	rat brain tissue, mouse brain tissue, mouse heart tissue, rat heart tissue
细胞定位	Cytoplasm
纯化	Affinity purification

抗原信息

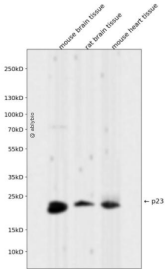
抗原信息	Recombinant fusion protein corresponding to Human p23.
序列	MQPASAKWYDRRDYVFIEFCVEDSKDVNVNFEKSKLTFSCGGSDNFKHLNEIDLFHCIDPNDSKHKRTDRSILCCLRKG ESGQSWPRLTKERAKLNWLSVDFNNWKDWE

靶点信息

研究背景	This gene encodes an enzyme that converts prostaglandin endoperoxide H2 (PGH2) to prostaglandin E2 (PGE2). This protein functions as a co-chaperone with heat shock protein 90 (HSP90), localizing to response elements in DNA and disrupting transcriptional activation complexes. Alternative splicing results in multiple transcript variants. There are multiple pseudogenes of this gene on several different chromosomes.
基因ID	10728

基因名	PTGES3
Swiss	Q15185
别名	PTGES3;P23;TEBP;cPGES

产品验证



Western blot analysis of p23 expressed in mouse brain tissue, rat brain tissue, mouse heart tissue using p23 Rabbit mAb at 1:1000. Secondary antibody: HRP Goat Anti-Rabbit IgG (H+L) at 1:5000. Lysates/proteins: 30ug per lane. Blocking buffer: 5% non-fat dry milk in TBST. Detection: ECL Enhanced Kit. Exposure time: 120s.

实验步骤

访问官网浏览详情: www.ablybio.cn