

TTF1 Rabbit mAb

货号: **AYM30831**

产品信息

反应	Human,Mouse,Rat
宿主	Rabbit
克隆性	Monoclonal
预测反应	
应用	WB IHC IF/ICC FC
推荐浓度	WB: 1:500 - 1:2000 IHC: 1:50 - 1:200 IF/ICC: 1:50 - 1:200 FC: 1:20 - 1:50
理论分子量	38kDa/41kDa
实测分子量	39kDa
形式	Liquid
保存条件	Store at -20°C. Avoid freeze / thaw cycles. Buffer: PBS with 0.75% BSA,50% glycerol,pH7.3.
偶联物	Unconjugated
阳性对照	NCI-H460
细胞定位	Nucleus
纯化	Affinity purification

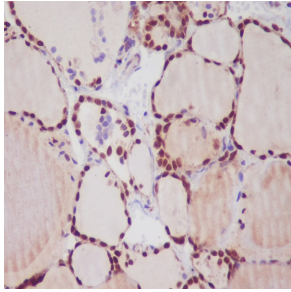
抗原信息

抗原信息	Recombinant fusion protein corresponding to Human TTF1.
序列	LEESYKKVGMEGGGLGAPLAAYRQGQAAPPTAAMQQHAVGHHGAVTAAYHMTAAGVPQLSHSAVGGYCNGNLGNMS ELPPYQDTMRNSASG

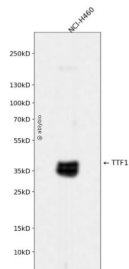
靶点信息

研究背景	This gene encodes a protein initially identified as a thyroid-specific transcription factor. The encoded protein binds to the thyroglobulin promoter and regulates the expression of thyroid-specific genes but has also been shown to regulate the expression of genes involved in morphogenesis. Mutations and deletions in this gene are associated with benign hereditary chorea, choreoathetosis, congenital hypothyroidism, and neonatal respiratory distress, and may be associated with thyroid cancer. Multiple transcript variants encoding different isoforms have been found for this gene. This gene shares the symbol/alias 'TTF1' with another gene, transcription termination factor 1, which plays a role in ribosomal gene transcription.
基因ID	7080
基因名	NKX2-1
Swiss	P43699
别名	NKX2-1;BCH;BHC;NK-2;NKX2.1;NKX2A;NMTC1;T/EBP;TEBP;TITF1;TTF-1;TTF1

产品验证



Immunohistochemical analysis of paraffin-embedded human thyroid, using TTF1 Antibody.



Western blot analysis of TTF1 expressed in NCI-H460 using TTF1 Rabbit mAb at 1:1000. Secondary antibody: HRP Goat Anti-Rabbit IgG (H+L) at 1:5000. Lysates/proteins: 30ug per lane. Blocking buffer: 5% non-fat dry milk in TBST. Detection: ECL Enhanced Kit. Exposure time: 120s.

实验步骤

访问官网浏览详情: www.ablybio.cn