

# 14-3-3 Rabbit mAb

货号: **AYM30827**

## 产品信息

反应	Human,Mouse,Rat
宿主	Rabbit
克隆性	Monoclonal
预测反应	
应用	WB IHC FC
推荐浓度	<b>WB:</b> 1:500 - 1:2000 <b>IHC:</b> 1:50 - 1:200 <b>FC:</b> 1:20 - 1:50
理论分子量	28kDa
实测分子量	28kDa
形式	Liquid
保存条件	Store at -20°C. Avoid freeze / thaw cycles. Buffer: PBS with 0.75% BSA,50% glycerol,pH7.3.
偶联物	Unconjugated
阳性对照	HT-29,A-549,NIH/3T3,Jurkat,Mouse lung,Mouse kidney,Rat spleen
细胞定位	cytoplasm,cytosol,extracellular exosome,focal adhesion,melanosome,perinuclear region of cytoplasm
纯化	Affinity purification

## 抗原信息

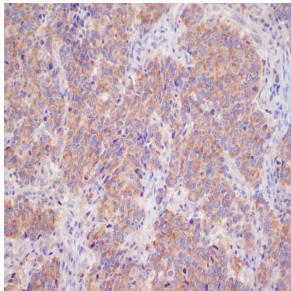
抗原信息	Recombinant fusion protein corresponding to Human 14-3-3.
序列	MTMDKSELVQKAKLAEQAERYDDMAAAMKAVTEQGHLSNEERNLLSVAYKNVVGARRSSWRVISSIEQKTERNEKKQQ MGKEYREKIEAELQDICNDVL

## 靶点信息

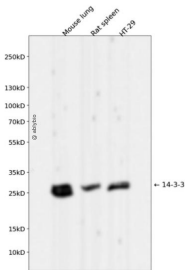
研究背景	This gene encodes a protein belonging to the 14-3-3 family of proteins, members of which mediate signal transduction by binding to phosphoserine-containing proteins. This highly conserved protein family is found in both plants and mammals. The encoded protein has been shown to interact with RAF1 and CDC25 phosphatases, suggesting that it may play a role in linking mitogenic signaling and the cell cycle machinery. Two transcript variants, which encode the same protein, have been identified for this gene. [provided by RefSeq, Jul 2008]
------	---

基因ID	7529,7534
基因名	YWHAB,YWHAZ
Swiss	P31946/P63104
别名	GW128; HEL-S-1; HS1; KCIP-1; YWHAA;14-3-3

## 产品验证



Immunohistochemical analysis of paraffin-embedded human breast cancer, using 14-3-3 Antibody.



Western blot analysis of 14-3-3 expressed in Mouse lung,Rat spleen,HT-29 using 14-3-3 Rabbit mAb at 1:1000. Secondary antibody: HRP Goat Anti-Rabbit IgG (H+L) at 1:5000. Lysates/proteins: 30ug per lane. Blocking buffer: 5% non-fat dry milk in TBST. Detection: ECL Enhanced Kit. Exposure time: 120s.

## 实验步骤

访问官网浏览详情: [www.ablybio.cn](http://www.ablybio.cn)