

Spermine synthase Rabbit mAb

货号: **AYM30825**

产品信息

反应	Human,Mouse,Rat
宿主	Rabbit
克隆性	Monoclonal
预测反应	
应用	WB IF/ICC
推荐浓度	WB: 1:500 - 1:2000 IF/ICC: 1:50 - 1:200
理论分子量	41kDa
实测分子量	41kDa
形式	Liquid
保存条件	Store at -20°C. Avoid freeze / thaw cycles. Buffer: PBS with 0.75% BSA,50% glycerol,pH7.3.
偶联物	Unconjugated
阳性对照	293T,DU145,SH-SY5Y,Mouse skeletal muscle,Mouse spinal cord,Mouse brain,Rat brain,Rat thymus,Rat uterus
细胞定位	cytosol,extracellular exosome
纯化	Affinity purification

抗原信息

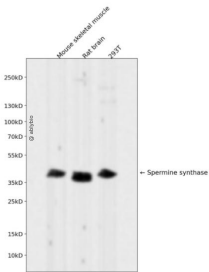
抗原信息	Recombinant fusion protein corresponding to Human Spermine synthase.
序列	TYTNKNGSFANLRIYPHGLVLLDLQSYDGAQGKEEIDSILNKVEERMKELSQDSTGRVKRLPPIVRGG AIDRYWPTADGR LVEYDIDEVYDEDSYQNI

靶点信息

研究背景	This gene encodes a protein belonging to the spermidine/spermin synthase family. Pseudogenes of this gene are located on chromosomes 1, 5, 6 and X. Mutations in this gene are associated with X-linked Snyder-Robinson mental retardation syndrome. Multiple transcript variants encoding different isoforms have been found for this gene.
基因ID	6611

基因名	SMS
Swiss	P52788
别名	SMS; MRSR; SPMSY; SRS; SpS; spermine synthase

产品验证



Western blot analysis of Spermine synthase expressed in Mouse skeletal muscle, Rat brain, 293T using Spermine synthase Rabbit mAb at 1:1000. Secondary antibody: HRP Goat Anti-Rabbit IgG (H+L) at 1:5000. Lysates/proteins: 30ug per lane. Blocking buffer: 5% non-fat dry milk in TBST. Detection: ECL Enhanced Kit. Exposure time: 120s.

实验步骤

访问官网浏览详情: www.ablybio.cn