

# EpCAM Rabbit mAb

货号: **AYM30822**

## 产品信息

反应	Human
宿主	Rabbit
克隆性	Monoclonal
预测反应	
应用	WB IHC
推荐浓度	<b>WB:</b> 1:500 - 1:2000 <b>IHC:</b> 1:50 - 1:200
理论分子量	34kDa
实测分子量	35kDa
形式	Liquid
保存条件	Store at -20°C. Avoid freeze / thaw cycles. Buffer: PBS with 0.75% BSA,50% glycerol,pH7.3.
偶联物	Unconjugated
阳性对照	A-431,HCT116,HeLa(Negative control)
细胞定位	Cell junction,Lateral cell membrane,Single-pass type I membrane protein,tight junction
纯化	Affinity purification

## 抗原信息

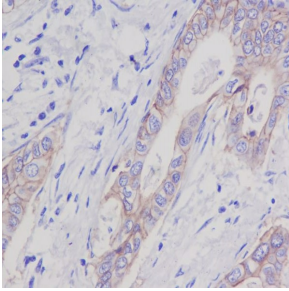
抗原信息	Recombinant fusion protein corresponding to Human EpCAM.
序列	QEECVCENYKLAVNCFVNNRQCQCTSVGAQNTVICSKLAAKCLVMKAEMNGSKLGRRAKPEGALQNNNDGLYDPDCDE SGLFKAKQCNGTSMCWCVNTAGVRRRTDKDTEITCSERVRTYWIIIELKHKAREKPYDSKSLRTALQKEITTRYQLDPKFITSI LYENNVITIDLQNSSQKTQNDVDIADVAYYFEKDKGESLFHSHKMDLTVNGEQLDLDPGQTLIYYVDEKAPEFSMQGL K

## 靶点信息

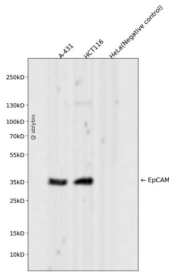
研究背景	This gene encodes a carcinoma-associated antigen and is a member of a family that includes at least two type I membrane proteins. This antigen is expressed on most normal epithelial cells and gastrointestinal carcinomas and functions as a homotypic calcium-independent cell adhesion molecule. The antigen is being used as a target for immunotherapy treatment of human carcinomas. Mutations in this gene result in congenital tufting enteropathy.
------	--

基因ID	4072
基因名	EPCAM
Swiss	P16422
别名	EPCAM;DIAR5;EGP-2;EGP314;EGP40;ESA;HNPCC8;KS1/4;KSA;M4S1;MIC18;MK-1;TACSTD1;TROP1

## 产品验证



Immunohistochemical analysis of paraffin-embedded human stomach carcinoma, using EpCAM Antibody.



Western blot analysis of EpCAM expressed in A-431, HCT116, HeLa (Negative control) using EpCAM Rabbit mAb at 1:1000. Secondary antibody: HRP Goat Anti-Rabbit IgG (H+L) at 1:5000. Lysates/proteins: 30ug per lane. Blocking buffer: 5% non-fat dry milk in TBST. Detection: ECL Enhanced Kit. Exposure time: 120s.

## 实验步骤

访问官网浏览详情: [www.ablybio.cn](http://www.ablybio.cn)