

# ECM1 Rabbit mAb

货号: **AYM30812**

## 产品信息

反应	Human,Rat
宿主	Rabbit
克隆性	Monoclonal
预测反应	
应用	WB IHC IF/ICC IP FC
推荐浓度	<b>WB:</b> 1:500 - 1:2000 <b>IHC:</b> 1:50 - 1:200 <b>IF/ICC:</b> 1:50 - 1:200 <b>IP:</b> 1:20 - 1:50 <b>FC:</b> 1:20 - 1:50
理论分子量	19kDa/46kDa/60kDa/63kDa
实测分子量	70kDa
形式	Liquid
保存条件	Store at -20°C. Avoid freeze / thaw cycles. Buffer: PBS with 0.75% BSA,50% glycerol,pH7.3.
偶联物	Unconjugated
阳性对照	HepG2,A-549
细胞定位	Secreted,extracellular matrix,extracellular space
纯化	Affinity purification

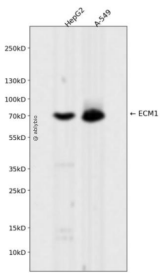
## 抗原信息

抗原信息	Recombinant fusion protein corresponding to Human ECM1.
序列	QLRACPSHQPDISSGLELPFPPGVPTLDNIKNICHLRRFRSVPRNLPATDPLQRELLALIQLEREFQRCCRQGNHTCTWKA WEDTLDKCYCDREYAVKTHHHLCRRHPPSPTRDECFARRAPYPNY

## 靶点信息

研究背景	This gene encodes a soluble protein that is involved in endochondral bone formation, angiogenesis, and tumor biology. It also interacts with a variety of extracellular and structural proteins, contributing to the maintenance of skin integrity and homeostasis. Mutations in this gene are associated with lipoid proteinosis disorder (also known as hyalinosis cutis et mucosae or Urbach-Wiethe disease) that is characterized by generalized thickening of skin, mucosae and certain viscera. Alternatively spliced transcript variants encoding distinct isoforms have been described for this gene.
基因ID	1893
基因名	ECM1
Swiss	Q16610
别名	ECM1;URBWD

## 产品验证



Western blot analysis of ECM1 expressed in HepG2,A-549 using ECM1 Rabbit mAb at 1:1000. Secondary antibody: HRP Goat Anti-Rabbit IgG (H+L) at 1:5000. Lysates/proteins: 30ug per lane. Blocking buffer: 5% non-fat dry milk in TBST. Detection: ECL Enhanced Kit. Exposure time: 120s.

## 实验步骤

访问官网浏览详情: [www.ablybio.cn](http://www.ablybio.cn)