

# PMF1 Rabbit mAb

货号: **AYM30810**

## 产品信息

反应	Human,Mouse,Rat
宿主	Rabbit
克隆性	Monoclonal
预测反应	
应用	WB IP
推荐浓度	<b>WB:</b> 1:500 - 1:2000 <b>IP:</b> 1:20 - 1:50
理论分子量	
实测分子量	25kDa
形式	Liquid
保存条件	Store at -20°C. Avoid freeze / thaw cycles. Buffer: PBS with 0.75% BSA,50% glycerol,pH7.3.
偶联物	Unconjugated
阳性对照	
细胞定位	cytosol,Golgi apparatus,nucleoplasm
纯化	Affinity purification

## 抗原信息

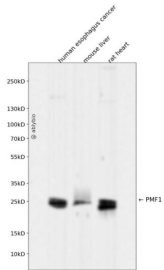
抗原信息	Recombinant fusion protein corresponding to Human PMF1.
序列	MAEASSANLGSGCEEKRHEGSSSESVPPGTTISRVKLLDSTMVDTFLQKLVAAGSYQRFTDCYKCFYQLQPAMTQQIYDKF IAQLQTSIREEISDIKEEGNLEAVLNALDKIVEEGKVRKEPAWRPSGIPEKDLHSVMAPYFLQRDTLRRHVQKQEAENQQL ADAVLAGRRQVEELQLQVQAQQAWQALHREQRELAVLREPE

## 靶点信息

研究背景	Part of the MIS12 complex which is required for normal chromosome alignment and segregation and kinetochore formation during mitosis. May act as a cotranscription partner of NFE2L2 involved in regulation of polyamine-induced transcription of SSAT.
基因ID	11243

基因名	
Swiss	Q6P1K2
别名	PMF1

## 产品验证



Western blot analysis of PMF1 expressed in human esophagus cancer, mouse liver, rat heart using PMF1 R abbit mAb at 1:1000. Secondary antibody: HRP Goat Anti-Rabbit IgG (H+L) at 1:5000. Lysates/proteins: 3 0ug per lane. Blocking buffer: 5% non-fat dry milk in TBST. Detection: ECL Enhanced Kit. Exposure time: 1 20s.

## 实验步骤

访问官网浏览详情: [www.ablybio.cn](http://www.ablybio.cn)