

# PSMA3 Rabbit mAb

货号: **AYM30808**

## 产品信息

反应	Human,Mouse,Rat
宿主	Rabbit
克隆性	Monoclonal
预测反应	
应用	WB IHC IF/ICC IP
推荐浓度	<b>WB:</b> 1:500 - 1:2000 <b>IHC:</b> 1:50 - 1:200 <b>IF/ICC:</b> 1:50 - 1:200 <b>IP:</b> 1:20 - 1:50
理论分子量	27kDa/28kDa
实测分子量	28kDa
形式	Liquid
保存条件	Store at -20°C. Avoid freeze / thaw cycles. Buffer: PBS with 0.75% BSA,50% glycerol,pH7.3.
偶联物	Unconjugated
阳性对照	293T,A-549,BxPC-3,Mouse liver,Mouse brain,Rat liver,Rat kidney
细胞定位	Cytoplasm,Nucleus
纯化	Affinity purification

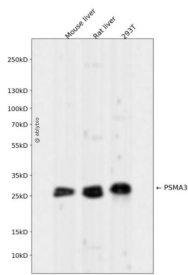
## 抗原信息

抗原信息	Recombinant fusion protein corresponding to Human PSMA3.
序列	MSSIGTGYDLSASTFSPDGRVVFQVEYAMKAVENSSTAIGIRCKDGVVFGVEKLVLSKLYEEGSNKRLFNVDHRHVGMAVAG LLADARSLADIAREEASNFRSNGYNIPLKHLADRVAMYVHAYTLYSAVRPFGCSEMLGYSVNDGAQLYMIDPSGVSYGY WGCAIGKARQAAKTEIEKLMKEMTCRDIVKEVAKIIVHDEVKDKAFELELSWVGELTNGRHEIVPKDIREEAKEYAKESL KEEDESDDNM

## 靶点信息

研究背景	The proteasome is a multicatalytic proteinase complex with a highly ordered ring-shaped 20S core structure. The core structure is composed of 4 rings of 28 non-identical subunits; 2 rings are composed of 7 alpha subunits and 2 rings are composed of 7 beta subunits. Proteasomes are distributed throughout eukaryotic cells at a high concentration and cleave peptides in an ATP/ubiquitin-dependent process in a non-lysosomal pathway. An essential function of a modified proteasome, the immunoproteasome, is the processing of class I MHC peptides. This gene encodes a member of the peptidase T1A family, that is a 20S core alpha subunit. Two alternative transcripts encoding different isoforms have been identified.
基因ID	5684
基因名	PSMA3
Swiss	P25788
别名	PSMA3;HC8;PSC3

## 产品验证



Western blot analysis of PSMA3 expressed in Mouse liver, Rat liver, 293T using PSMA3 Rabbit mAb at 1:1000. Secondary antibody: HRP Goat Anti-Rabbit IgG (H+L) at 1:5000. Lysates/proteins: 30ug per lane. Blocking buffer: 5% non-fat dry milk in TBST. Detection: ECL Enhanced Kit. Exposure time: 120s.

## 实验步骤

访问官网浏览详情: [www.ablybio.cn](http://www.ablybio.cn)